

**SAMUEL WAXMAN  
CANCER RESEARCH FOUNDATION**



**2011  
ANNUAL REPORT**





**SAMUEL WAXMAN  
CANCER RESEARCH FOUNDATION**

**2011  
ANNUAL REPORT**

The Samuel Waxman Cancer Research Foundation is an international organization dedicated to curing and preventing cancer. The Foundation is a pioneer in cancer research, focusing on uncovering the causes of cancer and reprogramming cancer cells. We dedicate ourselves to delivering tailored, minimally toxic treatments to patients. Our mission is to eradicate cancer by bridging the gap between lab science and the patient. Through our collaborative group of world-class scientists, the Institute Without Walls, investigators share information and tools to speed the pace of cancer research. Since our inception in 1976, the Foundation has awarded more than \$75 million to support the work of more than 175 researchers across the globe.

# OUR VISION

For 35 years, the Samuel Waxman Cancer Research Foundation has been a pioneer in tackling cancer at its root and reprogramming cancer cells. Our mission is twofold: to deliver less toxic treatments and to bring faster cures to patients. Enhancing the quality of life for cancer survivors is an important part of the research that we fund, which is why our scientists are looking at the biology of the disease and investigating ways to stop cancer from spreading.

Although current treatment options like chemotherapy and radiation are effective against some cancers, they are not effective against all cancers. Indeed, the harsh treatment options today can leave many survivors with long-term survivorship issues. The Waxman Foundation believes there must be a better way.

Our funded investigators include some of the best scientific minds in cancer research. We support ongoing multi-disciplinary innovative research projects by highly-respected teams of scientists who like to think out-of-the-box in solving a problem. Because their proposals are often considered “high risk” by institutions like the National Cancer Institute, these brilliant researchers might not receive funding for their new approaches to kill cancer cells.

The good news is that the Waxman Foundation has taken risks to invest in these researchers, many of whom have gone on to leverage their initial Waxman seed grant to secure millions of dollars from the National Cancer Institute—which deemed their projects too risky in the first place. Ironic? Perhaps. But this is the unique niche that the Foundation fulfills in cancer research. We’ve been doing it for 35 years and are very proud of what we have been able to accomplish together with your help. Thank you for joining with us as we envision a world without cancer.



MICHAEL NIERENBERG



SAMUEL WAXMAN, M.D.



GWEN DARIEN

**Michael Nierenberg**  
*Chairman*

Samuel Waxman

**Samuel Waxman, M.D.**  
*Founder and Scientific Director*

**Gwen Darien**  
*Executive Director*

# YEAR IN REVIEW

**JULY 1, 2010** The SWCRF awards more than \$2 million as part of its science grant program.

**AUG. 14, 2010** The 7th Annual Hamptons Happening raises more than \$250,000.

**SEPT. 14, 2010** Marcia and David Lavipour host a cocktail party with their niece Jennifer Schwab Yanowitz to launch a donor-directed grant in chronic myeloid leukemia.

**NOV. 7, 2010** Eleven runners from Team Waxman participate in the ING New York City Marathon and raise more than \$94,000.

**NOV. 18, 2010** The 13th Annual Collaborating for a Cure Gala raises nearly \$3.4 million.

**JAN. 1, 2011** The SWCRF invites cancer centers across the U.S. to apply for research grants.

**JAN. 27, 2011** The Max Cure Foundation partners with the Waxman Foundation to sponsor a grant in pediatric cancer research.

**APRIL 1, 2011** Deadline to submit grant proposals.

**APRIL 8, 2011** The Millennial Society raises \$92,000 at its annual Spring for a Cure benefit.

**MAY 15-16, 2011** The Annual Scientific Review takes place at Apella in the Alexandria Center for Life Science in New York City.

**MAY 16, 2011** Donors, board members and stakeholders attend the Annual Scientific Symposium, which also featured Donor Recognition Awards.

**JUNE 20, 2011** The 29th Annual Golf Tournament & Dinner at the Creek Club, in Locust Valley, N.Y., raises more than \$130,000.

**JUNE 24, 2011** The 2011–2012 SWCRF grant recipients are notified of their awards, which included individual and collaborative grants.



SAMUEL WAXMAN, JEAN SHAFIROFF, LAURIE L. SCHAFFRAN, MARCIA LAVIPOUR



LINDA TAUB, DAVID S. TAUB, MARION WAXMAN



LEFT: BEN HIEGER, BRIANA NIX; RIGHT: MICHAEL WASILEWSKI



DAVID PLOTKIN AND ANNMARIE PLOTKIN WITH THEIR CHILDREN, MAX, ALEXANDER AND ELLA



SAMUEL WAXMAN, SARAH DMITROVSKY, ETHAN DMITROVSKY



SHERYL CROW



MICHAEL NIERNBERG, ELIN NIERNBERG



DENA K. WEINER, SAMUEL WAXMAN



REUBEN MARK, SAMUEL WAXMAN



LUCILLE MONTRONY, JANE STANCZUK, SAMUEL WAXMAN, KATHY SARNA



JOSH SIEGEL, CAMILLA MARCUS SIEGEL, ALISSA JACOB, SARAH LEMING, BEN LEMING



NORMAN KRAMER, ROBERT IVANHOE, GARY JACOB, LAWRENCE WOLK

# YOUR INVESTMENT IN CANCER RESEARCH

Supporting cancer research is a long-term investment. For scientists, it takes years, even decades (if they're lucky) to see any fruition from the intense labor they pour into their research. The same can be said of donors who commit generous dollars to support the work.

How can donors be certain that their gifts to the Waxman Foundation are making a contribution toward innovative science? One way is the impact that our researchers are making in the cancer community. Some of the scientists who are funded by the SWCRF are cited five to six times more than the average scientist in top scientific journals. What does that mean? The SWCRF is wisely investing donor dollars to scientists who are furthering scientific advances.

We have been able to support the work of NIH-funded scientists who are taking new approaches in reprogramming cancer cells and, developing epigenetic therapies that have the potential to translate into minimally toxic treatments for patients.

Thank you for your dedication and commitment to the Foundation. To show you where your money goes, we have included a brief explanation of your long-term investment in cancer research.

## **COLLABORATIVE GRANTS**

Collaborative grants are awarded to investigators to form ongoing multi-disciplinary teams to move science from the bench to the clinic. In the past, many collaborative grant recipients have gone on to leverage their SWCRF seed grant and apply for and receive additional funding from the National Cancer Institute. In July 2011, the Foundation awarded 18 collaborative grants to researchers around the world studying differentiation therapy, epigenetics and cancer stem cells.

## **INDIVIDUAL GRANTS**

Individual grants from the Foundation are awarded to investigators who study potential novel therapies and conduct basic and translational research in reprogramming cancer cells. In the past, many individual grant recipients have gone on to apply for and receive collaborative grants from the Foundation. In July 2011, the Foundation continued to support the research of the three individual grant recipients from last year, and also added six additional grantees.

## **MOUNT SINAI MEDICAL CENTER**

Since 1976, the Foundation has supported researchers at the SWCRF laboratory in Mount Sinai Medical Center to study gene expression, tumor dormancy, breast cancer research, and hematologic research. Scientists at the Waxman lab have made breakthroughs over the years, including working with Chinese researchers to develop a less toxic therapy to cure acute promyelocytic leukemia (APL) as well as developing a small molecule inhibitor to target a deadly breast cancer known as triple-negative breast cancer.

## **SHANGHAI INSTITUTE OF HEMATOLOGY IN CHINA**

The Samuel Waxman Cancer Research Foundation was one of the first cancer research foundations to partner with researchers in China in the 1980s. The long-standing collaboration with researchers at the Shanghai Institute of Hematology (SIH) has led to a number of advances in cancer research, including the development of a less toxic therapy to cure APL. Continued support from the Emerald Foundation, Inc. and the Rose M. Badgeley Charitable Trust is helping scientists at the SIH conduct ongoing research to eradicate the leukemia stem cell.

# WHERE YOUR MONEY GOES



COLLABORATIVE GRANTS

55%



INDIVIDUAL GRANTS

26%



SWCRF LAB AT MOUNT SINAI

15%

SHANGHAI INSTITUTE  
OF HEMATOLOGY IN CHINA

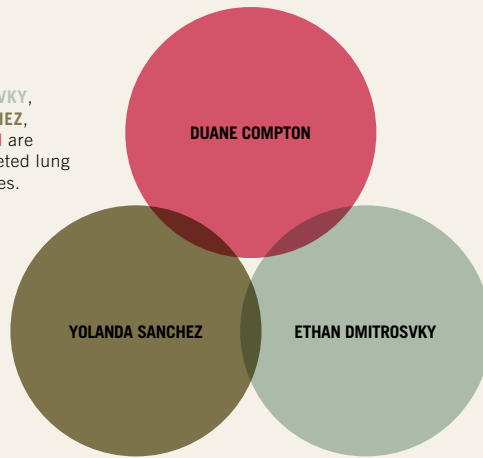
4%

ALLOCATION OF RESEARCH FUNDS (\$3.7 MILLION) 2011–2012

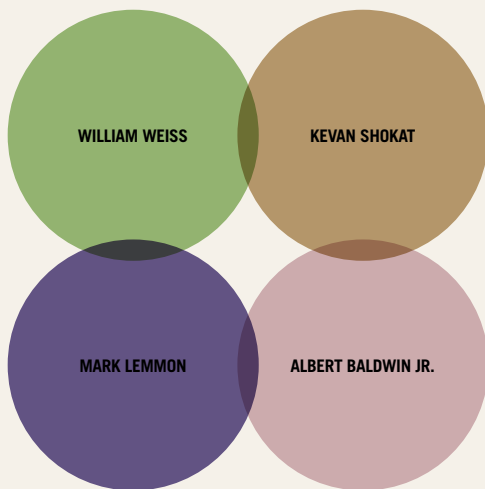
# SAMUEL WAXMAN CANCER RESEARCH FOUNDATION

# COLL

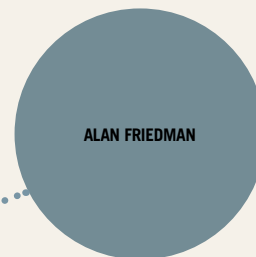
ETHAN DMITROVSKY,  
YOLANDA SANCHEZ,  
DUANE COMPTON are  
collaborating on targeted lung  
cancer therapies.



ETHAN DMITROVSKY,  
JONATHAN LICHT are collaborating  
on PLZF in lung cancer.

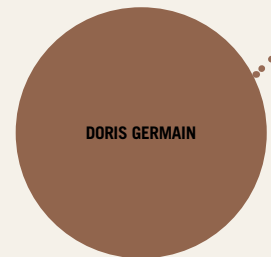


WILLIAM WEISS, KEVAN SHOKAT,  
MARK LEMMON, ALBERT BALDWIN JR. are studying  
a family of proteins in a deadly form of brain cancer.

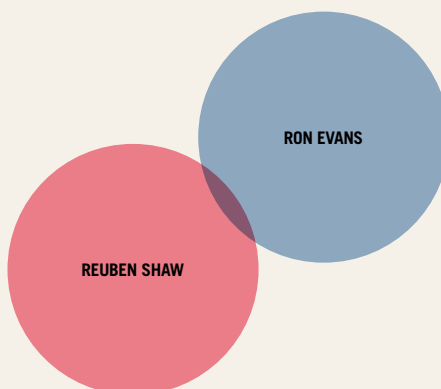


ALAN FRIEDMAN,  
ALBERT BALDWIN JR. are  
investigating programmed  
cell death in cancer by  
targeting proteins.

SAMUEL WAXMAN, DORIS GERMAIN  
are collaborating on a novel therapy  
in breast cancer research.



WILSON MILLER, JONATHAN LICHT  
are studying oncoproteins in blood cancers.

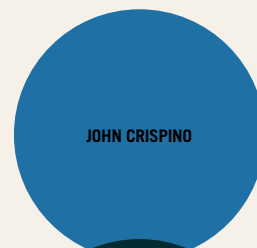


RON EVANS, REUBEN SHAW are studying  
the molecular mechanisms and the role of inflammation  
on diet-induced intestinal cancer.

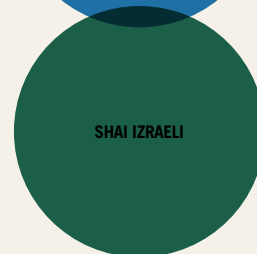
# ABORATING FOR A CURE

The Samuel Waxman Cancer Research Foundation believes collaboration drives innovation and brings faster cures to patients. These are some of the ways that members of our Institute Without Walls are working together to make breakthroughs in cancer research.

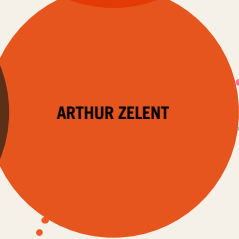
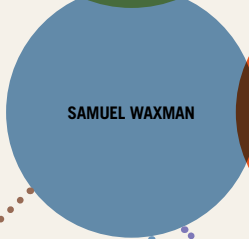
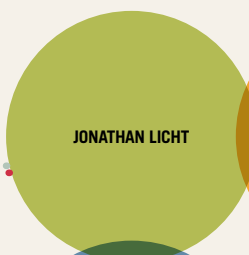
**ARTHUR ZELENT, FRANK RAUSCHER III** are targeting the Snail Machinery that controls the EMT differentiation program during metastasis.



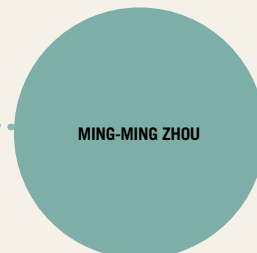
**JOHN CRISPINO, SHAI IZRAELI** are investigating the link between Down Syndrome and a form of leukemia.



**SHANGHAI INSTITUTE OF HEMATOLOGY, SAMUEL WAXMAN, ARTHUR ZELENT, JONATHAN LICHT** are collaborating with researchers in China to develop new therapies for leukemia.



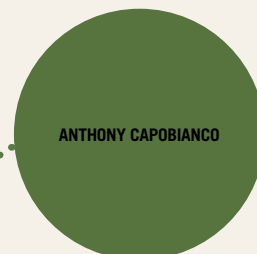
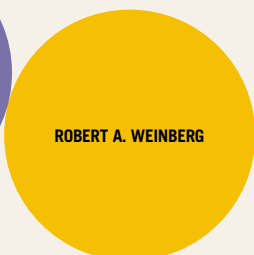
**ARTHUR ZELENT, MING-MING ZHOU** are developing a protein-inhibitor for targeted epigenetic cancer therapy.



**SAMUEL WAXMAN, ALAN ASHWORTH** are collaborating on triple-negative breast cancer.



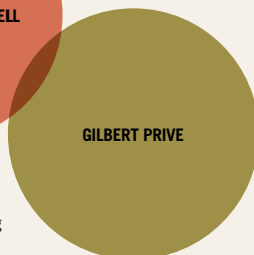
**ROBERT A. WEINBERG** is studying breast cancer stem cells.



**ANTHONY CAPOBIANCO, ALEXANDER MACKERELL** are exploiting the Notch Pathway to develop novel anti-cancer therapeutics.



**ARTHUR ZELENT, SAMUEL WAXMAN, ARI MELNICK, WILSON MILLER** are collaborating with researchers at the SIH to eradicate the leukemia stem cell.



**ARI MELNICK, ALEXANDER MACKERELL, GILBERT PRIVE** are targeting oncogenic transcriptional repressor proteins in B-cell lymphoma.

# WHAT WE DO

Cancer is not one disease. Hundreds of types of cancer exist, if not more. And so our scientists are studying the biology of cancer to tackle the disease at its root. They are analyzing how different genes and enzymes affect cancer's growth.

Which is why, "when our Scientific Advisory Board evaluates and recommends research grants for funding, they do so keeping in mind the big picture, and how each grant will support and add to the Foundation's body of work," explained Jonathan Licht, M.D., an Associate Scientific Director of the SWCRF.

"At times, people don't understand what we do because the Waxman Foundation is not driven to fund research in one type of cancer," said Gwen Darien, the Foundation's Executive Director. "It's not that we don't support research in specific programs, because we do fund research in breast cancer, brain cancer, colon cancer, leukemias, lung cancer, and pancreatic cancer. But the overlapping theme of funded projects must align with our mission to reprogram cancer cells."

How is the Waxman Foundation furthering cancer research? By fostering collaboration between scientists across geographical borders and across multiple disciplines.

"Grants only receive additional funding for subsequent years if scientists have demonstrated that they collaborated with other members of the Institute Without Walls," explained Samuel Waxman, M.D., the Founder and Scientific Director of the SWCRF. "Our definition of collaboration is not merely sharing cell lines and mouse models. We have molecular biologists working together with structural chemists and oncologists to identify novel therapies and new targets."

Not only that, but much of the research that Waxman-funded investigators are working on has the potential to be applied in other types of cancer because they are looking at enzymes, tumor markers and pathways that cross over into different types of leukemia and in some cases, even solid tumors.

When cancer develops, it's because the built-in instructions within cells to differentiate are not followed, explained Waxman. Scientists funded by the Waxman Foundation are trying to reverse that process, whether it's by flipping a genetic switch to reprogram that cancer cell to stop growing or by designing small molecules that block that message from being sent.

"The scientific process is laborious and often met with frustration when experiments don't lead to immediate success," said Ethan Dmitrovsky, M.D., who is an Associate Scientific Director of the SWCRF. "But the Waxman Foundation is committed to translating basic research to the cancer community and bringing faster cures to patients. Indeed, the Foundation is uniquely situated to bridging this gap between bench and bedside."

The nimble nature of the Foundation to identify and to fund research projects that have the high potential for important gains in cancer research is what sets it apart, said Darien. "I can honestly say that we support cutting-edge research by some of the best scientists in the world."

"The future of making progress in cancer research lies in members of the cancer community coming together to find cures across all disease types," said Waxman. "This is the vision behind what we do, which I believe is the most effective way to bringing about a world without cancer."



### BRAIN CANCER PROGRAM

Albert S. Baldwin, Jr., Ph.D., *University of North Carolina, Chapel Hill*

Mark Lemmon, Ph.D., *University of Pennsylvania*

Kevan Shokat, Ph.D., *University of California, San Francisco*

William Weiss, M.D., Ph.D., *University of California, San Francisco*

### COLON CANCER PROGRAM

Ronald M. Evans, Ph.D., *Salk Institute*

Reuben Shaw, Ph.D., *Salk Institute*

### LIVER CANCER PROGRAM

Stephen Baylin, M.D., *Johns Hopkins University*

Paul B. Fisher, M.Ph., Ph.D., *Virginia Commonwealth University*

Josep M. Llovet, M.D., *Mount Sinai Medical Center*

Devanand Sarkar, M.B.B.S., Ph.D., *Virginia Commonwealth University*

Samuel Waxman, M.D., *Mount Sinai Medical Center*

### PANCREATIC CANCER PROGRAM

Nabeel Bardessy, Ph.D., *Massachusetts General Hospital*

Paul B. Fisher, M.Ph., Ph.D., *Virginia Commonwealth University*

### CANCER STEM CELL PROGRAM

Julio Aguirre-Ghiso, Ph.D., *Mount Sinai Medical Center*

Nabeel Bardeesy, Ph.D., *Massachusetts General Hospital*

Stephen Baylin, M.D., *Johns Hopkins University*

Ravi Bhatia, M.D., *City of Hope*

Robert A. Casero, Ph.D., *Johns Hopkins University*

Margaret Goodell, Ph.D., *Baylor College of Medicine*

Benjamin G. Neel, M.D., Ph.D., *Ontario Cancer Institute*

Yolanda Sanchez, Ph.D., *Dartmouth School of Medicine*

Robert A. Weinberg, Ph.D., *Whitehead Institute for Biomedical Research*

Cynthia Zahnow, Ph.D., *Johns Hopkins University*

### MOUNT SINAI MEDICAL CENTER SWCRF LABORATORY

Julio Aguirre-Ghiso, Ph.D., *Mount Sinai Medical Center*

Eduardo Farias, Ph.D., *Mount Sinai Medical Center*

Doris Germain, Ph.D., *Mount Sinai Medical Center*

Yongkui Jing, Ph.D., *Mount Sinai Medical Center*

Boris Leibovitch, Ph.D., *Mount Sinai Medical Center*

Samuel Waxman, M.D., *Mount Sinai Medical Center*

### MELANOMA PROGRAM

Paul B. Fisher, M.Ph., Ph.D., *Virginia Commonwealth University*

Neal Rosen, M.D., Ph.D., *Memorial Sloan-Kettering Cancer Center*

### OVARIAN CANCER

Benjamin G. Neel, M.D., Ph.D., *Ontario Cancer Institute*

Garry P. Nolan, Ph.D., *Stanford University School of Medicine*

### BREAST CANCER PROGRAM

Alan Ashworth, Ph.D., *Institute of Cancer Research*

Albert S. Baldwin, Jr., Ph.D., *University of North Carolina, Chapel Hill*

Stephen Baylin, M.D., *Johns Hopkins University*

Robert A. Casero, Ph.D., *Johns Hopkins University*

Eduardo Farias, Ph.D., *Mount Sinai Medical Center*

Doris Germain, Ph.D., *Mount Sinai Medical Center*

Wilson Miller, M.D., Ph.D., *Jewish General Hospital*

Samuel Waxman, M.D., *Mount Sinai Medical Center*

Robert A. Weinberg, Ph.D., *Whitehead Institute for Biomedical Research*

Cynthia Zahnow, Ph.D., *Johns Hopkins University*

Arthur Zelent, Ph.D., *Institute of Cancer Research*

Ming-Ming Zhou, Ph.D., *Mount Sinai School of Medicine*

### LUNG CANCER PROGRAM

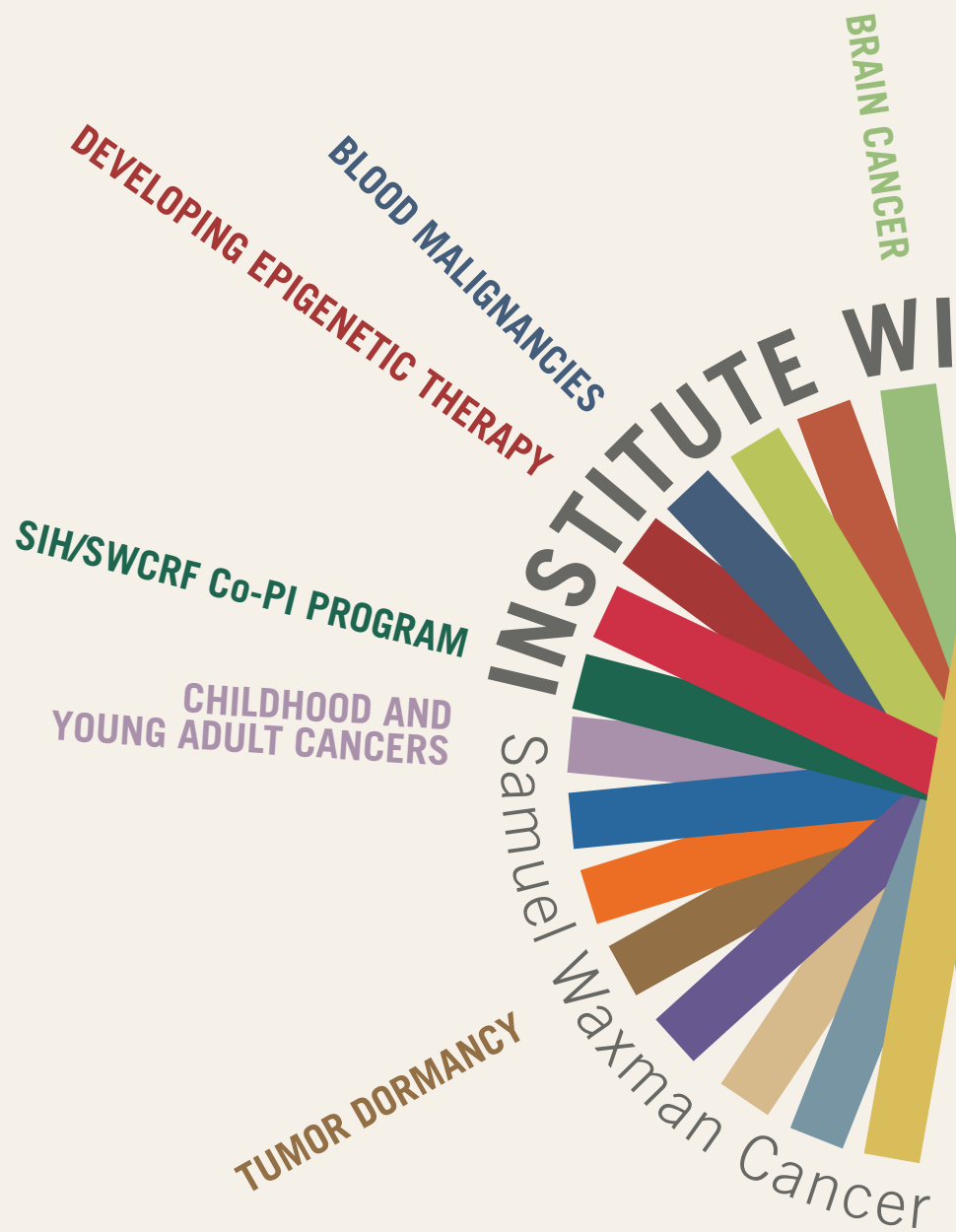
Duane Compton, Ph.D., *Dartmouth Medical School*

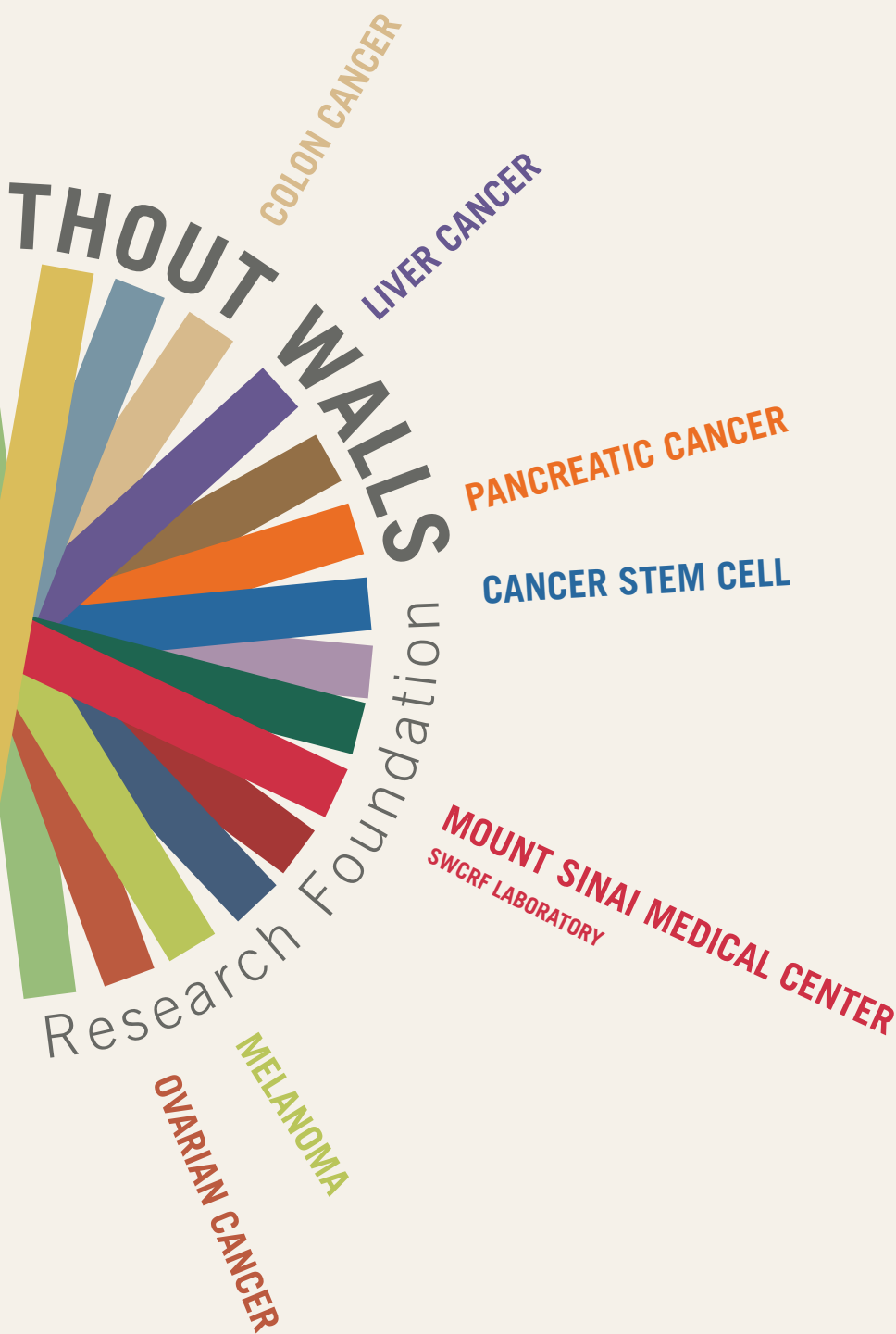
Ethan Dmitrovsky, M.D., *Dartmouth Medical School*

Gerard Evan, Ph.D., *University of California, San Francisco*

Yolanda Sanchez, Ph.D., *Dartmouth Medical School*

Jeffrey Settleman, Ph.D., *Genentech*





**TUMOR DORMANCY PROGRAM**

Julio Aguirre-Ghiso, Ph.D., *Mount Sinai Medical Center*  
 Eduardo Farias, Ph.D., *Mount Sinai Medical Center*

**CHILDHOOD AND YOUNG ADULT CANCERS**

Albert Baldwin, Jr., Ph.D., *University of North Carolina, Chapel Hill*  
 James E. Bradner, M.D., *Dana-Farber Cancer Institute*  
 Anthony Capobianco, Ph.D., *University of Miami*  
 John D. Crispino, Ph.D., *Northwestern University*  
 Alan Friedman, M.D., *Johns Hopkins University*  
 Christopher A. French, M.D., *Brigham and Women's Hospital*  
 Shai Izraeli, M.D., *Tel Aviv University*  
 Scott Hiebert, Ph.D., *Vanderbilt University*  
 Mark Lemmon, Ph.D., *University of Pennsylvania*  
 Kevan Shokat, Ph.D., *University of California, San Francisco*  
 Erwin G. Van Meir, Ph.D., *Emory University School of Medicine*  
 William Weiss, M.D., Ph.D., *University of California, San Francisco*

**SIH/SWCRF CO-PI PROGRAM**

Sai-Juan Chen, M.D., Ph.D. *Shanghai Institute of Hematology*  
 Zhu Chen, M.D., Ph.D. *Shanghai Institute of Hematology*

**DEVELOPING EPIGENETIC THERAPY**

Stephen Baylin, M.D., *Johns Hopkins University*  
 Anthony Capobianco, Ph.D., *University of Miami*  
 Robert A. Casero, Ph.D., *Johns Hopkins University*  
 Sai-Juan Chen, Ph.D., *Shanghai Institute of Hematology*  
 John D. Crispino, M.D., *Northwestern University*  
 Ronald M. Evans, Ph.D., *Salk Institute*  
 Alan Friedman, M.D., *Johns Hopkins University*  
 Margaret Goodell, Ph.D., *Baylor College of Medicine*  
 Scott Hiebert, Ph.D., *Vanderbilt University*  
 Shai Izraeli, M.D., *Tel Aviv University*  
 Yongkui Jing, Ph.D., *Mount Sinai Medical Center*  
 Craig T. Jordan, Ph.D., *University of Rochester*  
 Jonathan D. Licht, M.D., *Northwestern University*  
 Alexander MacKerell, Ph.D., *University of Maryland*  
 Ari Melnick, M.D., *Weill Cornell School of Medicine*  
 Wilson Miller, M.D., Ph.D., *Jewish General Hospital*  
 Kevin Petrie, Ph.D., *Institute of Cancer Research*  
 Gilbert Privé, Ph.D., *University of Toronto*  
 Frank J. Rauscher III, Ph.D., *Wistar Institute*  
 Ruibao Ren, M.D., Ph.D., *Brandeis University*  
 Samuel Waxman, M.D., *Mount Sinai Medical Center*  
 Yue Xiong, Ph.D., *University of North Carolina, Chapel Hill*  
 Arthur Zelent, Ph.D., *Institute of Cancer Research, London*  
 Ming-Ming Zhou, Ph.D., *Mount Sinai School of Medicine*

**BLOOD MALIGNANCIES**

Ravi Bhatia, M.D., *City of Hope*  
 Anthony Capobianco, Ph.D., *University of Miami*  
 Sai-Juan Chen, M.D., Ph.D., *Shanghai Institute of Hematology*  
 John Crispino, Ph.D., *Northwestern University*  
 Alan Friedman, M.D., *Johns Hopkins University*  
 Margaret Goodell, Ph.D., *Baylor College of Medicine*  
 Scott Hiebert, Ph.D., *Vanderbilt University*  
 Yongkui Jing, Ph.D., *Mount Sinai School of Medicine*  
 Craig T. Jordan, Ph.D., *University of Rochester*  
 Jonathan D. Licht, M.D., *Northwestern University*  
 Ari Melnick, M.D., *Weill Cornell Medical Center*  
 Warren Pear, M.D., Ph.D., *University of Pennsylvania*  
 Ruibao Ren, M.D., Ph.D., *Brandeis University*  
 Erwin G. Van Meir, Ph.D., *Emory University School of Medicine*  
 Samuel Waxman, M.D., *Mount Sinai School of Medicine*  
 Arthur Zelent, Ph.D., *Institute of Cancer Research*



## letter from the development chair

When you invest in cancer research, you are investing in the future—not just your own future, but the future of your children, your grandchildren and generations to come. Every dollar you give to the Waxman Foundation helps us bring about such a future, that is, a world without cancer.

At times it's hard for us to imagine that future when we lose loved ones to the disease. But please know that your generous donations and commitment to the Foundation are helping to make great strides in cancer research as scientists uncover more about the disease; investigating ways to reprogram and kill cancer cells.

It's amazing how far we have come in expanding our knowledge about cancer and developing effective therapies. The Waxman Foundation has played an important role in this effort for 35 years. We thank you for your continued support in our endeavor.

—Gary Jacob  
*Development Chair*

# THANK YOU

## \$200,000 AND UP

The Mark Family Fund  
Mr. and Mrs. Michael B. Nierenberg  
The Skirball Foundation

## \$100,000-\$199,999

The Rose M. Badgeley Charitable Trust  
Emerald Foundation, Inc.  
Mr. and Mrs. Arminio Fraga  
Ms. Mary Henry and Mr. Howard Rubin  
The Soros Fund Charitable Foundation  
Ms. Dena K. Weiner and  
Mr. David Rozenholz

## \$50,000-\$99,999

The Chasanoff Foundation  
Mr. and Mrs. Wes Edens  
Mr. and Mrs. Scott Eichel  
Mr. and Mrs. Johan Eveland  
Mr. and Mrs. Bernard Kaminsky  
The Max, Malie, Dr. Leonard and  
Bernice Laub Foundation  
The Max Cure Foundation  
Mr. Martin Migliara  
Mr. and Mrs. Craig Overlander  
Mr. and Mrs. Nick Pappas  
Mr. and Mrs. Bernard Sillins  
Three Strohm Sisters Family Foundation  
Mr. and Mrs. Jeffrey Verschleiser  
Ms. Laura Zwak and Mr. James DeMare, Jr.

## \$20,000-\$49,999

Amherst Securities Group, L.P.  
Bank of America  
Mr. and Mrs. David B. Benham  
Mr. and Mrs. Brian Bornstein  
The Caliban Foundation  
Mr. and Mrs. Peter Cherasia  
Mr. and Mrs. Peter Claman  
Ms. Kemberly Danner  
Dr. Roger Gilbert  
Ms. Jennifer Goldstein and  
Mr. Kevin O'Malley  
Good Hill Partners  
Mr. and Mrs. Clifford Greenberg  
Mr. Alan C. Greenberg  
Hatteras Financial Corporation  
Mr. and Mrs. Gary Jacob  
Mr. and Mrs. Bill Jennings  
Mr. Matthew C. Katke  
Mr. and Mrs. James Keller  
Mr. Stuart Kronick  
Mr. Thomas Marano  
Musa and Tom Mayer  
MDC Partners, Inc.  
Mr. and Mrs. Robert Michiels  
Palm Bay International  
Mr. and Mrs. Jeffrey Perlowitz  
Mrs. Leah P. Sanzari  
Mr. Brad Scott

Mr. Craig Sedmak  
Mara and Baron Silverstein  
Ms. Patricia Smith  
Mr. Charles Sorrentino  
Mr. and Mrs. Marc Spilker  
Mr. and Mrs. Joseph G. Steffa, Jr.  
Mr. and Mrs. Laurence Tarica  
Mr. and Mrs. David S. Taub  
Titan Advisors, LLC  
Mr. and Mrs. Spencer Waxman  
Mr. and Mrs. Matthew Zisette

## \$10,000-\$19,999

Anonymous  
Mr. and Mrs. Joseph Ades  
Mr. Anthony Albanese  
Mr. and Mrs. Lawrence Altman  
Annaly Capital Management, Inc.  
Mr. and Mrs. Peter Antico  
Mr. Erik Bisso  
Mr. and Mrs. John D. Brewer, Jr.  
BTIG, LLC  
Mr. and Mrs. Joseph Ceccarini  
Mr. and Mrs. Matthew R. Chasin  
Mr. Steven Choran  
The Chotin Group  
Citi Business Services  
Cushman & Wakefield Inc.  
Mr. and Mrs. Mark Davies  
Mr. David Deitche  
Mr. Thomas Durkin  
Mr. John Eck  
Mr. and Mrs. Robert Eichler  
EverBank  
Ms. Karen Fang  
Mr. Jim Finkel  
Mr. and Mrs. Paul Friedman  
Mr. Gary Gladstein  
Mr. and Mrs. William Gorin  
Mr. and Mrs. Jay M. Green  
Greenberg Traurig, LLP  
Hilliard Farber & Co., Inc.  
Mr. Michael Hokin  
Mr. Jeffrey Humphrey  
Investcorp  
Jefferies & Company, Inc.  
Mr. Kevin Jenks  
Ms. Pat Keefe and Mr. Richard Plotkin  
Mr. and Mrs. Howard Kurz  
Mr. and Mrs. Carey Lathrop  
Mr. and Mrs. Eric Leinwand  
Mr. and Mrs. Jay Levine  
Mr. and Mrs. Leonard Litwin  
M & T Bank  
Mr. Brian Marrow  
Mr. Michael Mazzei  
Mr. John McNiff  
Mr. Matthew McQueen  
Dana and Michael Miller  
Mr. and Mrs. Randal A. Nardone

Nomura  
Options Group  
Mr. and Mrs. Hensen Orser  
Mr. and Mrs. Glenn Pere  
Ms. Maria T. Poli and Mr. James C. Weakley  
Mr. Perry Rahbar  
Mr. and Mrs. Elihu Rose  
Mr. and Mrs. Louis Rosenfeld  
Ms. Magali Schvartz and  
Mr. Paul A. Van Lingen  
Mr. and Mrs. Thomas Shea  
Mr. and Mrs. Adam Siegel  
Mr. Richard D. Simonds  
Mr. and Mrs. Andrew Sloves  
Mr. Larry Spallanzani  
Mr. Cass Tokarski  
Tullett Prebon  
Mr. and Mrs. John Twyman  
Mr. and Mrs. Brian Vescio  
Weinberger Family Foundation  
Mr. and Mrs. Stephen Weinstein  
Wells Fargo  
Whitton-Spector Foundation  
Norman and Rosita Winston Foundation  
Mr. Mitchell Winter  
Mr. and Mrs. Robert Yaffe

### \$5,000–\$9,999

Anonymous  
Mr. Joshua M. Anderson  
Ms. Shari Antonucci  
Mr. and Mrs. William Arnold  
Mr. and Mrs. Jay G. Axelrod  
Erin and Peter Bartlett  
Mr. and Mrs. Don Benningfield  
Mr. Solomon Berkoff  
Mr. and Mrs. Stanley Brach  
Braver Stern Securities, LLC  
Mr. and Mrs. Theodore Breck  
Mr. George K. Brommer, III  
Mr. Leland Bunch  
Capital One  
Mr. Brian Carosielli  
Mr. Donald Corsaro  
Mr. Jesse Elhai  
Mr. and Mrs. Andrew Friedwald  
The G & A Foundation  
Ms. Jeanmarie Genirs and  
Mr. Paul Josling  
Mr. Olivier Cojot Goldberg  
Gonsoulin Charitable Trust  
Mr. and Mrs. Jeffrey D. Gravelle  
Mr. and Mrs. Peter S. Grouev  
Mr. and Mrs. Garry Haggerty  
Mr. and Mrs. Dennis A. Herman  
Mr. and Mrs. W. David Hinkelman  
Mr. Max Jaeger  
Ms. Lauren Katz  
Mr. Matthew Knopman  
Mr. and Mrs. Josh Kuriloff

Mr. Joshua Levin  
Mr. and Mrs. Jesse Litvak  
The Litwin Foundation, Inc.  
Mr. and Mrs. Steve Mayer  
Mr. and Mrs. Richard J. Mazer  
Mr. Brian McGrath  
Mr. and Mrs. Mark Michael  
Mr. Peeyush Misra  
Kelsey Nakken  
Mr. Mohammed Noorali  
Mr. Jim V. Reidy  
Mr. Randy Reiff  
Mr. and Mrs. Robert J. Richter  
Mr. Ken Riis  
Mr. Mark Rosen  
Mr. Tim Rosenberg  
Mr. Joel Rotondo  
Mr. and Mrs. Glenn Rufrano  
Mr. and Mrs. John Ryan  
Mr. and Mrs. Ricky Sandler  
Mr. and Mrs. Charles Schaffran  
Mrs. Edwin C. Scheurer  
Mr. John David Scially  
Mr. Richard Scott  
Mr. and Mrs. Tony M. Shogren  
Mrs. Riva Ariella Slifka  
Mr. Nicholas P. Smith  
Mr. and Mrs. Steven Starker  
Mr. Darren C. Stumberger  
Mr. Richard C. Talbot  
Mr. Marc J. Toscano  
Mr. Theodore T. Wang  
Dr. and Mrs. Samuel Waxman  
Mr. and Mrs. Joshua B. Weintraub  
Gary and Nina Wexler  
Mr. and Mrs. Ken Zegar

### \$1,000–\$4,999

Anonymous  
Anonymous  
Anonymous  
Mr. and Mrs. Steven Abrahams  
Mr. & Mrs. Bret Ackerman  
Mr. and Mrs. Myron Adler  
Mr. Kevin Alexander  
ALKLEM Plumbing, Inc.  
Mr. Jonathan Allen  
Mr. and Mrs. Carl Anderson  
Mr. Erle Archer  
Mr. and Mrs. Robert K. Arslanian  
Mr. and Mrs. Andrew M. Assael  
The Attilio & Petrocellii Foundation  
Mr. Branden Auishar  
Mr. and Mrs. Jonathan E. Babkow  
Mr. Peter Bainlardi  
Mr. and Mrs. Shlomo Bakhash  
Mr. and Dr. Emilio Bassini  
Mr. and Dr. Harley Bassman  
Mr. Kirk Baugher  
Ms. Erin Beasley

Mr. Timothy Beaulac  
Steven and Penny Beberman  
Mr. Michael Bebon  
Mr. Harvey Beker  
Mr. Brian Benson  
Mr. Steven Bergman  
Mr. and Mrs. David Berkowiz  
JL Bernstein  
Mr. Bill Birnbaum  
The Jonathan and Sara Bonesteel Foundation  
Mr. Tom Boran  
Mr. and Mrs. Peter L. Briger  
Mr. James K. Broder  
Mr. and Mrs. Brant Brooks  
Mr. Eric Brophy  
Mr. and Mrs. Peter M. Brunell  
Mr. Christopher Burnett  
CA Construction NY, Inc.  
Mr. and Mrs. Stephen Callahan  
Mr. Joseph Campise  
Bonnie and David Cantor  
Ms. Claire Capeci  
Mr. and Mrs. Jeffrey Caress  
Ms. Patricia Carlo  
Mr. David Carlson  
Mr. Thomas J. Carroll  
Mr. and Mrs. Phil Cedar  
Mr. and Mrs. Michael Chapey  
Ms. Jisook Choi  
Mr. and Mrs. Samuel S. Choi  
Drs. Deborah and Michael Cindrich  
Mr. and Mrs. Scott Claman  
Ms. Jessica Cohen  
Ms. Ethel Cohen  
Mr. and Mrs. Mark Cohen  
Mr. and Mrs. David Cohen  
Mr. and Mrs. Maurice J. Cohn  
Lawrence and Ann Cohn  
Max B. Cohn Family Foundation  
Mr. Thomas Coleman  
Congregation Rodeph Sholom  
Mr. and Mrs. Brian Connors  
Mr. and Mrs. Thomas A. Conway  
Mr. TC Cosby  
Coyne Family Foundation  
Mr. Ryan Craft  
Mr. David H. Crean  
Mr. and Mrs. Richard J. Crescenzo  
Mr. and Mrs. Anthony J. Cuti  
Mr. Jonathan Daniel  
Mr. Francesco Daniele  
Stacy and Gene Davis  
Ms. Eboni Dawkins  
Mr. Michael De Asla  
Mr. Dennis DeBusschere  
Mr. Cory DeForest  
Mr. Ravi Desai  
Mr. Jeffrey Desind  
Ms. Helen Dickers  
Mr. David Disque

Dr. and Mrs. Ethan Dmitrovsky  
Mr. Thomas J. Doherty  
Ms. Adina Dolfman  
Mr. and Mrs. Edward Donohue  
Mr. and Mrs. Ted Donohue  
Mr. and Mrs. John Draghi  
Mr. Craig Drill  
Mr. Michael Dubno  
Mr. Richard J. Duffy  
Ms. Sandra K. Dugoff  
Mr. and Mrs. Jim Egan  
Mr. and Mrs. Brad Egna  
Mr. Richard A. Eimbinder  
Mr. and Mrs. David Eisner  
Ms. Eva M. Cugini and Mr. Gavin Elwes  
Mr. Robert Engelking  
Ms. Kristen Erickson  
Mr. and Mrs. Eric G. Eschenauer  
Ms. Jayme Fagas and Mr. Paul Strauch  
Mr. Timothy P. Fallon  
Famiglia - DeBartolo, LLC  
Mr. Scott Farrell  
Mr. William J. Farrell  
Mr. and Mrs. Mike Fedak  
Stefanie and Paul Feidelson  
Mr. Aaron Fernandes  
Mr. and Mrs. Joseph Feshbach  
Mr. and Mrs. Jack Feuer  
Mr. Shawn Finnerty  
FirstGiving.com  
Ms. Kristin Fizulich  
Mr. Christopher Flanagan  
Ms. Jean Fleischhacker  
Mr. and Mrs. James E. Frankel  
Mr. and Mrs. Robert Friedman  
Mr. Daniel Frommer  
Mr. W. Tyler Garrow  
Mr. Christopher Garvie  
Mr. Yimin Ge  
Mr. Robert E. Genirs  
Mr. and Mrs. Timothy Genirs  
Ms. Margarita Genis  
Mr. Joseph Geraci  
Mrs. Sue Gibbs  
Mr. and Mrs. Andrew M. Giesler  
Mr. William Glenn  
Mr. and Mrs. Seth Glickenhau  
Mr. and Mrs. Peter Gold  
Jeffrey and Laurie Goldberger  
Mr. Daniel Goodwin  
Mr. and Mrs. Paul Greenfield  
Dr. and Mrs. Jeffrey Gropper  
Mr. and Mrs. Alan Grossman  
Ms. Felicia Grumet and Mr. Mitchell Levine  
Mr. Ajit Gupta  
Dr. and Mrs. Alan Gwertzman  
Mr. and Mrs. William P. Hackett  
Mr. and Mrs. Jim Hagan  
Mr. and Mrs. Adam Hagfors  
Mr. and Mrs. Jeffrey Hagler

Mr. Jason Hanna	Mr. and Mrs. Gerald L. Lennard	Mr. Russell Pemberton	Mr. and Mrs. Nathaniel Singer
Mr. and Mrs. Scott Hansen	Mr. John Patrick Leo	Mr. and Mrs. Arnold S. Penner	Mr. and Mrs. Phil Sivin
Mr. and Mrs. James Harrington	Mr. Peter M. Lesueur	Mr. and Mrs. Andrew Perel	Mr. Frank Y. Skibo
Mr. Stephen Harris	Dr. and Mrs. Jonathan D. Licht	Mr. Brett Perlmutter	Mr. and Mrs. Walter Small
Mr. and Mrs. Cory Hechler	Mr. Daniel Lichtenberg	Dr. Richard Pestell	Mr. Steve Smallowitz
Mr. and Mrs. William Heskett	Mr. and Mrs. Keith Lind	Mr. Gregory Petrie	Mr. and Mrs. Michael Sokol
Mr. and Mrs. Patrick Higgins	Ms. Michelle Liu	Mr. and Mrs. Michael Petteruti	Mr. Michael Solomon
High Five Foundation	Mr. John Livingstone	Mr. Joel I. Picket	Mr. Frank Song
Mr. Brian Hightower	Mr. and Mrs. Leo LiVolsi	Mr. Jerome Pickholz	Mr. and Mrs. Richard Spitz
Mr. and Mrs. Richard Hill	Mr. Doug Logigian	Jamie and Mark Pollack	Ms. Alicia St. Pierre
Ms. Carole Hochman	Mr. and Mrs. Eric Londa	Mr. Ed Power	Mr. Mark Stavin
Mr. and Mrs. Ed Hochstadter	Mr. Anthony W. Luppino	Mr. and Mrs. Rodney Propp	Stawski Partners
Samuel and Hannah Holzman Trust	Mr. Desmond MacAuley	Ms. Carmine Pugliese	Mr. Joseph Steffa, Sr.
Mr. Brian Horan	Mr. and Mrs. Steven Major	Mr. and Mrs. Salvatore L. Puliafico	Mr. Clifford Sterling
Mr. and Mrs. Michael Hubbe	Mr. Jeffery Malfetti	Mr. and Mrs. Adi Rabinowitz	Mr. and Mrs. Ilan Stern
Mr. and Mrs. Anders Hurst	Mr. Harvey Mallement	Mr. David Rabuano	Beth and Lee Stettner
Mr. and Mrs. Stuart Israel	Mr. and Mrs. Mike Manclark	Mr. Philip Radus	Mr. David Stirling
Mr. Robert Ivanhoe	Ms. Denis Manelski	Mr. James T. Raezer	Ms. Mary Stone
Mr. Seth Jackier	Mr. and Mrs. Frederick Marcus	Mr. Stewart Rahr	Mr. John J. Suh
Ms. Linda Jacob	Mr. and Mrs. Michael A. Marriott	Mr. David Randle	Mr. Conor Taniguchi
Ms. Alissa Jacob	Mr. Howard Marsh	Rapaport Shallat Foundation	Mr. and Mrs. Chal Taylor
Mr. Taimur Jamil	Mr. and Mrs. James P. Martin	Mr. and Dr. James Rapaport	Ms. Cynthia Temple
Florence and Evan Janovic	Jill and J. Jay Mautner	Frank J. Rauscher III, Ph.D.	Mr. Howard H. Tomlinson
Mr. and Mrs. Andrew S. Javorsky	Mr. and Mrs. Jeffrey Mayer	Mr. David Reedy	Tsai Fan Yu Foundation
Mr. Timothy Jay	Mr. Peter McCubbin	Mrs. Rashaan Reid	Mr. Willem Van Beek
Mr. Charles Jin	Mr. and Mrs. Jay McDermott	Ms. Kara Richardson and Mr. Brian Lehrer	Mr. David S. Vandersnow
Mr. Brodie Johnson	Ms. Julie McDermott	Mr. Brad Riefler	Mr. and Mrs. Paul E. Vignone
Mr. William H. Johnston	Mr. Whit McDowell	Mrs. Flori Roberts	Mr. and Mrs. Manuel Villar
Ms. Anusha Joly	McDowell Foundation	Ms. Sylvia Rodman	Mr. Subra Viswanathan
Mr. and Mrs. Kenneth Joseph	Mr. Colin McGahren	Ms. Isabel Rose	Mr. and Mrs. Richard C. Volpe
Mr. and Mrs. Bill Joseph	Mr. Greg McGuffin	Mr. Eric Rose	Mr. and Mrs. Michael Walmark
Mr. Brian Kane	Mr. and Mrs. Charles McGuffog	Mr. and Mrs. Alan Rosenbaum	Mr. Edward Walsh
Mr. and Mrs. Robert Kantor	Ms. Ely McGuire and Mr. Ron Trotta	Mr. and Mrs. Barry Rosenberg	Mr. Brian Weadock
Ms. Mary Y. Kantor	Mr. Michael McKeever	Mr. and Mrs. Robert Rotanz	The Wechsler Foundation
Mr. and Mrs. Marc Kaplan	Mr. and Mrs. Victor Merlino	Dr. and Mrs. Steven Rubin	Mr. and Mrs. Michael Weinbaum
Mr. David Kaplan	Mr. Benjamin Merrill	Mr. and Mrs. Michael I. Rudell	Ms. Clara Weinberg
Karuna Foundation	Kirk Meyers	Mr. Edward M. Sadovnik	Carole and Marcus Weinstein
Mr. and Mrs. Erik Katz	Mr. and Mrs. Russell Middleton	Mr. Warren Saft	Mr. Michael Weinstein
Mr. George S. Kaufman	Mr. Neil Miller	Mr. and Mrs. Lawrence Saidenberg	Mr. Shawn Welan
Ms. Tracey Keegan	Mr. Donald Mills	Mr. and Mrs. Madhu B. Satyanarayana	Mr. Aaron Welsh
Gershon and Carol Kekst	Mr. Frank Mistero	Mr. Doug Scales	Mr. Timothy Welsh
Mr. Ryan Kelly	Mr. Matt Mitchell	Schaffer, Schonholz & Drossman, LLP	Mr. and Mrs. Ted Wender
Mr. Christopher G. Kelly, Jr.	Mr. Alan Mittleman	Mr. and Mrs. Michael Schneeweiss	Mr. John C. Whitehead
Mr. and Mrs. Steven Keltz	Mr. Milton Miyashiro	Mr. and Mrs. Jerome M. Schneider	Mr. and Mrs. Richard Wilpon
Mr. George Kenny	Mr. Erik W. Muller	Mr. and Mrs. Greg Schwab	Mr. Donald C. Wissell
Mr. Andrew Kent	Mr. and Mrs. Stephen J. Muto	Dr. Frederick Schwab	Cindy and David Wittels
Mr. and Mrs. Robert Kinberg	Mr. Kyle Nagel	Dr. and Mrs. Robert Schwab	Dr. and Mrs. Richard A. Wolff
Mr. and Mrs. Joe Klinow	Mr. Jeff Nagelberg	Mr. Carsten Schwarting	Woodbine Solutions, LLC
Mr. Christopher Klow	Mr. and Mrs. Edmond Nassim	Schwartz & Company, LLP	Carolan and Peter Workman
Mr. Chris Knutson	Mr. Jared Nearpass	Mr. and Mrs. Howard D. Schwartz	Mr. David Wren
Mr. and Mrs. Gary Korn	Mr. Louis Nees	Ms. Pattie Sears	Mr. Kelly Wright
Mr. and Mrs. Andrew Kramer	Mr. Michael Neigoot	Mr. Nicholas Seminara	Jennifer and Keith Yanowitz
Mr. and Mrs. Norman Kramer	The New Yorker Hotel	Mr. John Semrai	Mr. Jason Yeung
Mr. Morris Kramer	Mr. and Mrs. Ira Nierenberg	Mr. Marvin Sensabaugh	Mr. and Mrs. Nelson Young
Mr. and Mrs. James Kuhn	Mr. and Mrs. Eric C. Norquist	Mr. and Mrs. Martin Shafiroff	Hua Yu, Ph.D.
Ms. Heidi Kurlander and Mr. Andrew Kail	Mr. Michael O'Leary	Mr. and Mrs. Barton Shallat	Ms. Dina Zuckerberg
Mr. Joseph La Delfa Jr.	Ms. Theresa O'Neill	Meryl and Kenneth Sherman	
Mr. and Mrs. Michael Labadorf	Ms. Lauren Osborne	Mr. Matthew Shiel	<b>\$500-\$999</b>
Mr. Jon Landis	Mr. Joe Ottomanelli	Mr. and Mrs. Howard Shlafmitz	Ms. Leora Amdur
Dr. Tracy Lathrop	Mr. Keith Overlander	Mr. Justin Short	Anita Wolfe Interiors
Mr. Reuven Latovitzki	Mr. and Mrs. Brian Pannuzzo	Mr. Stephen B. Siegel	AON Foundation
Mr. and Mrs. David Lavipour	Mr. Ketan Parekm	Mr. and Mrs. Allen Siegel	Mr. Jude Arena
Mr. and Mrs. Brian Leary	Mr. and Mrs. Russel Parentela	Mr. and Mrs. Steven Siegel	Mr. James Asselstine
Mr. Roger Lehman	Ms. Kiva G. Patten	Mr. Richard Sigg	Mr. Paul Avery

Mr. Arthur Backal  
Mr. Gerard Baker  
Mr. and Mrs. Bradford Benjamin  
Ms. Gabriela Bernat  
The Bess and Israel Workman Foundation  
Mr. Peter Bliven  
Mr. and Mrs. Fred Blume  
Mr. Andrew Brown  
Carmine and Arthur Clothiers  
Mr. Peter Chalif  
Mr. and Mrs. Danny Chestler  
Mr. and Mrs. Harold K. Cohen  
Mr. Cory Crosland  
Mr. and Mrs. David Cyganowski  
Ms. Kylie A. Davis  
Mr. and Mrs. Gary Davis  
The Debrah Lee Charatan Foundation, Inc.  
Ms. Suzanne Denihan  
Ms. Rosalind Devon and Ms. Sandy Batkin  
Mr. Grant Dewey  
East Hampton Indoor Tennis Club  
Mr. and Mrs. Martin Eglow  
Mr. and Mrs. Mark Ellis  
Mr. and Mrs. Robert Elman  
Mr. Sanford D. Elsass  
Mr. and Mrs. William Ettelson  
Mr. David Fallick  
Mr. and Mrs. Marc E. Florin  
Miss Kate Forlenza  
Mr. Robert Friedland  
Mr. and Mrs. Howie Furst  
Furth Family Foundation  
Mr. and Mrs. Richard Gallen  
Ms. Kristin Gennerich  
Mr. and Mrs. Kevin Giddis  
Ms. Nelsa Gidney  
Melissa & Ken Glassman  
Ms. Erica R. Gold & Mr. David Klinkowize  
Ms. Marjorie Goldin  
Mr. Mohil Gupta  
Mr. Martin Harding  
Ken & Nancy Haron  
Mr. and Mrs. Claude Hayat  
Mr. and Mrs. Howard Haykin  
Mr. and Mrs. Michael Held  
Mr. and Mrs. David Heller  
Mr. John Heppollette  
Herbert Irving Comprehensive Cancer Center  
Mr. Michael Higgins  
Ms. Wendy Hirschhorn  
Mr. and Mrs. John C. Horvitz  
Mr. Jason Hough  
Mr. Richard Hyun  
International Brotherhood of Electrical Workers  
Ms. Lori Ireland  
Irrigation Solutions, LLC.  
Mr. Christopher Jonas  
Mr. Jon Kamen  
Ms. Janet Yaseen Kaplan and The Honorable Bruce H. Kaplan  
Mr. Richard Kasnia  
Mr. Geoffrey Kauffman  
Mr. and Mrs. Roger Kaufman

Ms. Samantha Kessler  
Ms. Gloria Kindman  
Mr. Laurence J. Kirschbaum  
Nancy and Andrew Kleeeger  
Mr. Harvey Knopman  
Mr. and Mrs. A. Lawrence Kolbe  
Mr. and Mrs. Oscar Lama  
Mr. and Mrs. Shawn P. Landau  
Mr. and Mrs. Robert N. Lane  
Mr. and Mrs. Norman Lattman  
Mr. Michael Lavipour  
Ms. Berta Lavipour  
Mrs. Phyllis Leventhal  
Ms. Laila Levitas  
Jack & Mimi Leviton Amsterdam Foundation  
Ms. Maureen Liebes  
Ms. Ann Liguori  
Mr. Kevin Ling  
Mr. Gerald Little  
Mr. Bartley Livolsi  
Mr. and Mrs. Jeffrey Loewy  
Mr. and Mrs. Thomas Long  
Mr. Fred Madonna  
Mr. Matthew Mallgrave  
Mr. William Mangan  
Ms. Lisa Marks  
Ms. JeanneMarie McAnarly  
Mr. Chris McNichol  
Mr. Keith Merlin  
Mr. and Mrs. Alan Morris  
Mr. and Mrs. Jeffrey Moskowitz  
Linda and Jeffrey Moslow  
Ms. Stephanie Pangia  
Mr. Michael F. Parlamis  
Pierre's  
Mr. Laurence Pike  
Mr. Dennis B. Poster  
Mr. Dan Promislo  
Ms. Katherine Quinn  
Ms. Jennifer Raiser  
Mr. Robert F. Rardin  
REI Charitable Trust  
Mrs. Lora Reichman  
Mr. Brad Reisner  
Mr. John Rice  
Mr. and Mrs. Marc E. Richards  
Ken and Rebecca Roban  
Ms. Bonnie Rodin  
Mr. and Mrs. Eric Rothfeld  
Mr. Greg Royce  
Mr. Andrew Sabin  
Mr. and Mrs. Zachary J. Schreiber  
Mr. David Schwab  
Rina and Amnon Shalhov  
Mr. and Mrs. Jerome Shapiro  
Mr. Joshua M. Siegel  
Mr. and Mrs. Jerome Slutsky  
SNR Denton  
Mr. and Mrs. Richard Solomon  
Mr. Jerome S. Solomon  
Mr. James Spindler  
Mr. and Mrs. Melvin Stecker  
The Honorable and Mrs. Sidney H. Stein  
Mr. Craig Stein

Mr. and Mrs. Roger Strong  
Mr. Gregory Swanson  
TD Bank  
Mr. Daniel Tomson  
Ms. Stacey Verbeek  
Mr. Douglas Vissicchio  
Mr. and Mrs. Scott Waxman  
Ms. Sharon Wheaton  
Mrs. Jennifer Wielgosz  
Mr. and Mrs. Kenneth Wilpon  
Dr. Debra Wattenberg and Mr. Brett Rosen  
Mr. and Mrs. Ben Wolfe  
Zamir Family Foundation  
Zeichner Ellman & Krause LLP  
Mr. Adam Zoia

### IN HONOR OF/IN MEMORY OF

Mary L. Bendik  
Donald Blechman  
Lois Cheny  
George Harrell Childs  
Sydelle Chusid  
Peter Claman  
Cris Cleland  
Pat DiPietrantonio  
Elliot and Karen Fishkin  
Elliot and Barbara Fishkin  
Mark J. Fizulich  
James E. Frankel  
Nancy Gilbert  
Gary Gladstein  
Judi Gladstein  
Marsha L. Gladstein  
Steven Glaser  
Jay M. Green  
Clifford and Alyssa Greenberg  
Carol Grubman  
Sara Hansen  
Scott Hansen  
Wilma Hurst  
Richard Jackson  
Alissa Jacob  
Gary Jacob  
Linda Jacob  
Shirley Klivan  
Dorris Konzer  
Michael Lari  
David and Marcia Lavipour  
Jessica A. Levin  
Abner and Mildred Levine  
Stefano Loffredo  
Keith Lombardo  
Camilla R. Marcus Siegel  
James Massaia  
John Massaia  
Helen Mazer  
Maggie Meade  
Kandi Michel  
Joanna Mufson  
Nina Muller  
Charles Nakash  
Beloved Uncle Nat  
Susan Niederman  
Michael B. Nierenberg

Julie Porzio  
Elizabeth Postereich  
James Rapaport  
Charles and Laurie Schaffran  
Edwin C. Scheurer  
Arnold Schwartz, M.D.  
Alma B. Simmons  
Howard Simon  
Jordan Sokol  
Michael Sokol  
Jenny Song  
Martin and Aly St. Pierre  
Charles Wantman  
Alec Waxman  
Samuel Waxman  
John Weed  
Saul Weinberger  
Leonard Weinstein  
Fern Weiss  
Theresa Wells  
David D. Wielgosz  
David Workman

### A NOTE TO OUR SUPPORTERS

We have carefully reviewed all gifts made to the Samuel Waxman Cancer Research Foundation to ensure each gift is properly recognized. Gifts mentioned exclude in-kind donations. The Thank You list includes gifts made between July 1, 2010 and June 30, 2011.

Occasionally, despite our best efforts, errors do occur. If we have made mistakes, we sincerely apologize in advance. You can alert us of such errors by contacting our office at 212.867.4502.

Please note that we make every effort to follow the donor's preferences when compiling the annual report list. If you would prefer to have your name listed differently in the future, please let us know.

### PHOTOCREDITS

**PAGE 2 FROM TOP TO BOTTOM:** REBECCA WEISS; DANNY WILCOX FRAZIER;  
**PAGE 3 FROM TOP TO BOTTOM:** ADRIEL REBOH / PATRICKMCMULLAN.COM; PHOTO COURTESY BRIANA NIX; PHOTO COURTESY MICHAEL WASILEWSKI; STEVEN HENRY; REBECCA WEISS; PATRICK MCMULLAN; IAN LONDIN; ILIR BAJRAKTARI / PATRICK MCMULLAN CO.; JERRY LACAY; **PAGE 5:** DANNY WILCOX FRAZIER; PHOTO COURTESY DARTMOUTH MEDICINE MAGAZINE/JUNIPER TRAILS; PHOTO COURTESY SAI-JUAN CHEN **PAGE 6-7:** ILLUSTRATION BY KRISTI NORGAARD; **PAGE 9:** IAN LONDIN; **PAGE 10-11:** ILLUSTRATION BY KRISTI NORGAARD; **PAGE 12:** PHOTO COURTESY GARY JACOB

# FINANCIAL STATEMENT

(Unaudited) July 1, 2010–June 30, 2011

---

## Revenue

Contributions	550,000
Program Grants	1,080,000
Fundraising Income (Net of Expense)	1,891,000
Investment Income	175,000
Total Revenue	<u>\$3,696,000</u>

---

## Expense

Program Services	\$2,897,000
Fundraising	250,000
Management and General	720,000
Total Expense	<u>\$3,867,000</u>

---

**Surplus/(Deficit)** (\$171,000)

**Net Assets** \$6,452,000

# SAMUEL WAXMAN CANCER RESEARCH FOUNDATION

## **CHAIRMAN**

Michael Nierenberg

## **VICE PRESIDENTS**

Gary Jacob, J.Jay Mautner, David S. Taub, Dena K. Weiner

## **SECRETARY**

Laurie L. Schaffran

## **TREASURER**

Thomas A. Conway

## **BOARD OF DIRECTORS**

David B. Benham, Dale Claman, James E. Frankel,  
Gary Gladstein, Clifford Greenberg, Dennis A. Herman, Linda Herman, Alissa Jacob,  
Costas Kondylis, Abner Levine, Mildred Levine,  
Camilla Marcus Siegel, Musa Mayer, Howard Shlafmitz, Tony M. Shogren,  
Clifford Sterling, Samuel Waxman, M.D., Spencer Waxman

## **FOUNDER AND SCIENTIFIC DIRECTOR**

Samuel Waxman, M.D.

## **EXECUTIVE DIRECTOR**

Gwen Darien

## **HONORARY BOARD**

Maureen Cogan  
Martin L. Coyne  
Mary Kantor  
Susan W. Rose  
Alan P. Safir\*  
Joan A. Safir\*  
Alfred J. Seaman\*  
Zena Wiener  
*\* Past Chair*

## **CHAIRMAN'S COUNCIL**

Lawrence Altman  
Peter Claman  
Robert E. Fischer  
Arminio Fraga  
Thomas Marano  
Richard Mazer  
Edward Sheldon  
Bernard Sillins

## **ASSOCIATE SCIENTIFIC DIRECTORS**

Ethan Dmitrovsky, M.D.  
Jonathan Licht, M.D.

## **SCIENTIFIC ADVISORY BOARD**

Steven J. Burakoff, M.D.  
Riccardo Dalla-Favera, M.D.  
Lorraine Gudas, Ph.D.  
Alan Rosmarin, M.D.  
Nancy Speck, Ph.D.  
Hua Yu, Ph.D.

## **MILLENNIAL SOCIETY EXECUTIVE COMMITTEE**

Alissa Jacob  
Ethel Cohen  
Kylie Davis  
Camilla Marcus Siegel  
Lauren Moise  
Bryan Rodman  
Jake Sokol

## **FOUNDATION STAFF**

Amanda Aronson  
Carole Asher  
Jay Camp  
Michelle A. Nicholas  
Jenny Song  
Bridget Stein

## **ANNUAL REPORT DESIGN**

Yolanda Cuomo, NYC



**SAMUEL WAXMAN  
CANCER RESEARCH FOUNDATION**

420 Lexington Avenue, Suite 825, New York, NY 10170 Tel: 212-867-4502

[swcrf@waxmancancer.org](mailto:swcrf@waxmancancer.org) [WaxmanCancer.org](http://WaxmanCancer.org)