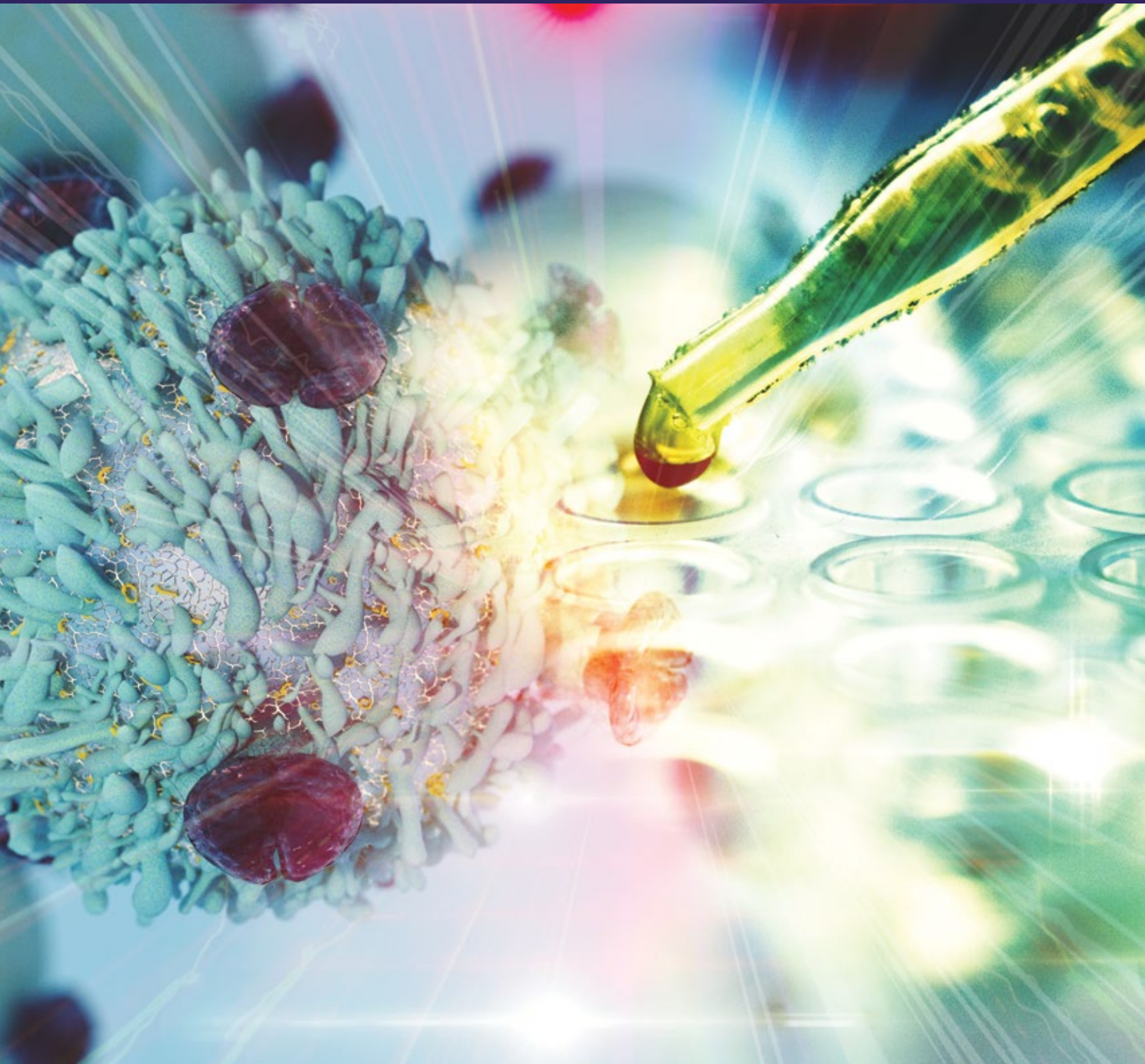


A YEAR OF ADVANCEMENT



ANNUAL REPORT 2021



SAMUEL WAXMAN CANCER
RESEARCH FOUNDATION

ANNUAL REPORT 2021

TABLE OF CONTENTS

Letter from SWCRF Leadership.....	1
A Cure is in Sight, But... ..	2
<i>Aging AND Cancer</i> Journal Improving Patient Outcomes.....	3
2021 Annual Scientific Review.....	4
Six Common Research Themes	5
Defeating Breast And Ovarian Cancer	6
Samuel Waxman Cancer Research Foundation Receives Coveted 4-Star Rating From Charity Navigator.....	7
Science Funded By Your Donations.....	8
And The Award Goes To	10
\$10 Million Initiative To Fund 5 Years Of SWCRF Research Is Launched	11
Successful Five-Year <i>Collaborating For A Cure</i> Capital Campaign Ends.....	12
Donor Spotlights.....	13
Live, Inperson Events Returned	14
Donors/Supporters	16
Financial Statement	24

The Samuel Waxman Cancer Research Foundation mission is to eradicate cancer by funding collaborative cross-institutional research to identify and correct abnormal gene function that causes cancer. This research is the basis for developing minimally toxic treatments for all patients with cancer.



A YEAR OF ADVANCEMENT

December 2021 marked the 50th anniversary of the “War on Cancer”, which was launched with an initial \$100 million federal investment in scientific research and a national commitment to finding a cure. Founded in 1976, the Samuel Waxman Cancer Research Foundation (SWCRF) has been a part of this battle for 47 years.

Thanks to decades of research, we now have better prevention methods, improved technologies such as mammograms and colonoscopies that detect cancer at earlier and more treatable stages, and hundreds of new therapies and treatments. In fact, 50 years ago there were only 16 cancer medications approved by the FDA. Today, there are more than 640.

Every day, investments in research continue to develop more effective treatment options, including new immunotherapies and targeted therapies that are proving to be less toxic than chemotherapy and radiation. SWCRF-funded investments in the Institute Without Walls™ have contributed to moving research that address multiple forms of cancer to clinical trials.

All these advancements are saving lives and improving patient quality of life. Cancer mortality rates are down 27 percent in the last 20 years. However, cancer remains a leading cause of death in the U.S. and around the world. And 50 years after this war was declared, a cure remains elusive.

Additionally, with aging being the leading risk factor for developing cancer, and an increasingly aging population, the incidence of cancer will continue to rise, creating an unprecedented global burden. Yet, research focused on the link between aging and cancer is grossly underfunded, contributing to suboptimal treatment for older patients. Remember, 90% of all cancer occur after age 50!

SWCRF is leading the fight to address the links between aging and cancer.

This past year, the Foundation formed a collaboration with the Tisch Cancer Institute at Mount Sinai to fund teams of investigators to study cancer and aging. SWCRF also created partnerships with the National Cancer Institute and the National Institute on Aging in 2018, a program that has been extended until 2024; co-launched the International Center for Aging and Cancer in Hainan, China in 2019; and the following year partnered with Wiley Publishing to publish *Aging AND Cancer*, a new peer-reviewed journal showcasing research focused on aging and cancer.

We are committed to advancing cancer research for the next 50 years. With your continued support we can find a cure.

Sincerely,



Michael Nierenberg



Samuel Waxman, M.D.



William T. Sullivan



Michael Nierenberg
Chairman



Samuel Waxman, M.D.
Founder and CEO



William T. Sullivan
Executive Director

AGING AND CANCER

A CURE IS IN SIGHT, BUT ...

By Dr. Samuel Waxman

Decades of research have led to significant advancements in fighting cancer. Fifty years ago, a cancer diagnosis was whispered about or kept secret, treatment options were limited and often highly toxic.

Today, preventions, cancer screenings, vaccines, and medications have improved patient outcomes and prolonged lives. In the past 20 years, cancer mortality rates have decreased by nearly 30 percent.

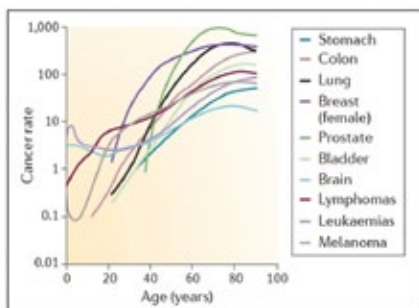
Yet, because aging is the leading risk factor for developing cancer, and we have an increasingly aging population, the largest impediment to finding a cure lies in the research disparities that neglect to address the important links between aging and cancer.

This specific research focus is unacceptably underfunded, contributing to suboptimal treatment for older patients and the rising incidence of cancer around the world.



Dr. Samuel Waxman

THE INCIDENCE OF MOST HUMAN CANCERS INCREASES WITH AGE



Source: National Cancer Institute

To address this, SWCRF has entered into a new collaboration with the Tisch Cancer Institute at Mount Sinai to launch a new \$1 million collaboration to fund teams of investigators studying cancer and aging. Both organizations will contribute equally to this two-year research program and work together to prioritize, evaluate, and award research grants to combat the rising rates of cancer around the world. New grants will begin in 2022.

Additionally, the Partnership on Aging and Cancer Research Program with the National Cancer Institute (NCI) and the National Institute on Aging (NIA) was created in 2018 (this partnership was recently extended to 2024 with new grants to be funded in fall 2022). One such study by SWCRF-researcher, Dr. Carl June from the University of Pennsylvania, collaborating with Nan-Ping Weng, Ph.D. from the NIA, have teamed up to improve the therapeutic effect of new immunotherapies to treat chronic lymphocytic leukemia and multiple myeloma, two blood malignancies associated with aging. Their promising research aims to find new pathways to boost CAR T cells to produce anti-tumor activity.

SWCRF also launched *Aging AND Cancer* in 2020 in partnership with Wiley Publishing, the only peer-reviewed journal to showcase research focused on this complex topic. To date, six issues have published dozens of papers which are improving our understanding of the links between aging and cancer and highlighting studies that could lead to newer treatments.



AGING AND CANCER

AGING AND CANCER JOURNAL

IMPROVING PATIENT OUTCOMES

Two years ago, in collaboration with Wiley Publishing, SWCRF launched *Aging AND Cancer*, a new scientific journal advancing research breakthroughs and thought leadership aimed at addressing the rising incidence of cancer in aging populations and to developing better treatments. During these first two years, the new journal has published 6 issues and nearly 30 papers that are expanding our understanding of treating cancer in older patients.

An exciting study in the February issue titled, “A case for improving frail patient outcomes in multiple myeloma with phenotype-driven personalized medicine,” demonstrated that using a drug sensitivity test could help individualize medications for older people who often can’t tolerate the typical multiple myeloma treatment.

Another paper, “The potential of cord blood to replenish young immune cells against cancer,” printed in the October edition examined if umbilical cord blood, which is considered a source of younger immune cells for anti-infectious immunity and cancer immunotherapy, could be effective for replenishing aging immune cells against tumors.

“The Aging AND Cancer journal is proving to be a vital outlet that is combatting the significant deficiency in research focused on the links between aging and cancer, but ultimately it will lead to improvements in health outcomes for older populations,” said Dr. Waxman.

The journal’s Editor-in-Chief, James DeGregori, Ph.D., Deputy Director at the University of Colorado Cancer Center, is a notable research scientist and an investigator who has received previous funding from the SWCRF research collaboration with the NCI and NIA.



The journal is led by Drs. DeGregori and Shen Baiyong (of the Shanghai Jiao Tong University School of Medicine in China), plus an eight-member editorial board who peer-review articles and determine the journal’s content. The board includes distinguished scientists from the United States, China, Germany, Italy, and Japan including Ruibao Ren, Ph.D. of the Shanghai Jiao Tong University School of Medicine, Director of the International Center on Aging and Cancer, and an SWCRF-funded investigator.

For more information visit <https://onlinelibrary.wiley.com/journal/26438909>.

Dr. James DeGregori was appointed editor-in-chief of the first-ever Wiley journal on “Aging AND Cancer.”

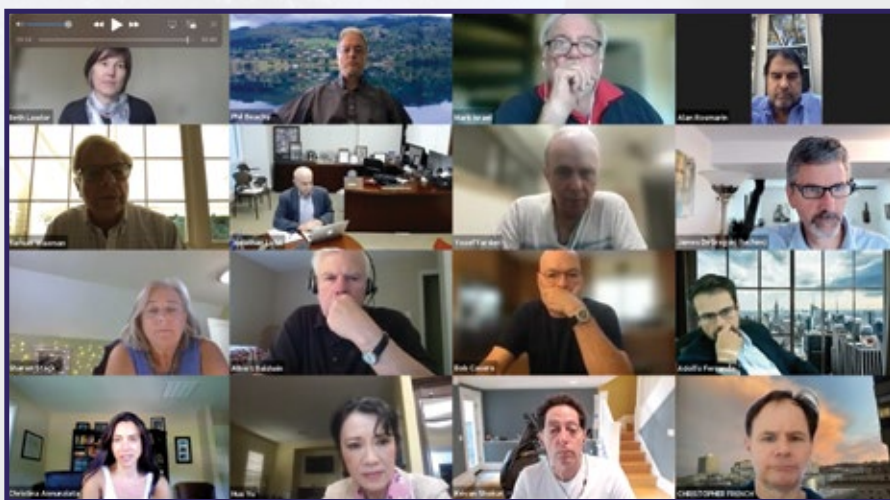


2021 ANNUAL SCIENTIFIC REVIEW

For the second year in a row, the annual SWCRF Scientific Review was conducted virtually due to the COVID-19 pandemic. Nearly 60 SWCRF-funded investigators from as far as Israel and China, logged in to share their research progress and present proposals for future study.

Each presentation, plus the submitted reports, are not only shared with all SWCRF investigators - enhancing collaborations and brainstorming - but are also evaluated by the Scientific Advisory Board to determine continued investment.

"Despite the challenges posed by COVID-19, the 2021 Scientific Review proved once again that SWCRF-funded researchers are among some of the brightest minds in cancer research," said Dr. Waxman. "By working together to explore new scientific directions and publish high-impact papers, they are leading the way towards a future with better, less toxic treatments for cancer."



This year's virtual meeting included presentations from members of the SWCRF Institute Without Walls™, Innovation Grant recipients; researchers from the Partnership for Aging and Cancer Research in collaboration with the National Cancer Institute and the National Institute on Aging, the pair of scientists under the Gladstein Family Bladder Cancer Research Program, and investigators funded by the collaboration with The Alan B. Slifka Foundation and the Israel Cancer Research Fund which was established to study Ewings Sarcoma, a form of cancer in children and young adults. There was also a special keynote address by Aldofo Ferrando, M.D., Ph.D. on the role and mechanisms of Phf6 in hematopoietic stem cell aging.

The 2021 Scientific Review was made possible by the generous support from Leidos Biomedical Research with an education grant from the Tsai-Fan Yu Foundation.

Epithelial Ovarian Carcinoma

- Leading cause of death from gynecologic disease in the U.S.
- 75% of women are diagnosed at stage III/IV after metastasis has occurred
- Poor survival: stage III – 39%, stage IV – 17%
- Late diagnosis due to subtle symptoms and anatomical location of ovaries
- Prevalent ascites

"By working together to explore new scientific directions and publish high-impact papers, they are leading the way towards a future with better, less toxic treatments for cancer." – Dr. Samuel Waxman

YOUR DONATIONS AT WORK

SIX COMMON RESEARCH THEMES

Last year, SWCRF continued funding the largest group of investigators in its nearly 50-year history. More than \$2 million was invested in 53 scientists working collaboratively to speed up the pace of cancer research.

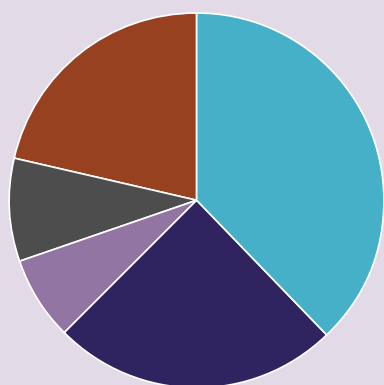
In analyzing our funded research programs, we found six common themes that are central to advancing our mission – 1) addressing abnormal gene function, 2) studying cancer progression, 3) discovering new cancer treatment targets including immunotherapies, 4) understanding responses to cancer/treatment, 5) fighting cancer cell dormancy and metastasis, and 6) moving research to clinical trials.

These themes are vital in addressing all forms of cancer and as demonstrated in the chart below, SWCRF has allocated donor-generated funds in support of science studying 14 of the most common types of cancer.

“Without the contributions from our generous donors, SWCRF would not be able to continue to fund top researchers around the world, each working together to find better ways to treat cancer,” said Dr. Waxman. “We are humbled by their ongoing support.”

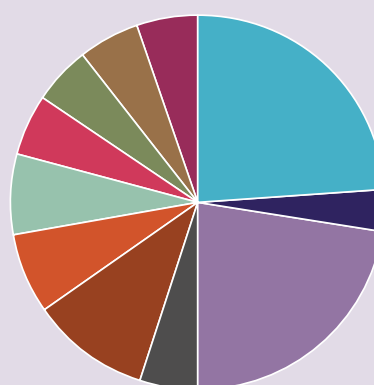
Grantees included members of the Institute Without Walls™, scientists within the Partnership for Aging and Cancer Research Program with NCI and NIA; the Gary Gladstein Family Bladder Cancer Research Program, the U.S. and Israel Research Program in collaboration with The Alan B. Slifka Foundation and the Israel Cancer Research Fund, and the Triple Negative Breast Cancer Foundation.

SWCRF GRANTS BY PROGRAM
2020-2021



Institute Without Walls Grants	38%
Innovation Grants	25%
Aging and Cancer	21%
Israel-U.S. Collaboration	9%
Gladstein Bladder Cancer	7%

SWCRF RESEARCH BY CANCER TYPE
2020-2021



Aging and Cancer	Immunology/Biology of Cancer
Bladder	Lung
Blood (Leukemia, Lymphoma, MDS, Multiple Myeloma and Pediatric Leukemia)	Ovarian
Brain	Pancreas
Breast	Sarcoma
	Various (Colorectal, Liver, Neck)

YOUR DONATIONS AT WORK

DEFEATING BREAST AND OVARIAN CANCER

Breast cancer is the second most common cancer to impact women (skin cancer is first), leading to an estimated 282,000 new cases and 43,600 deaths last year. And while less prevalent, there are nearly 22,000 ovarian cancer cases and an estimated 14,000 deaths. However, ovarian cancer has about half the 5-year survival rate of breast cancer.

SWCRF is committed to funding research towards better patient outcomes for those diagnosed with breast and ovarian cancer.

Promising recent research funded in part by SWCRF with grants from the Triple Negative Breast Cancer Foundation and the National Institute of Health led to two recently published peer-reviewed studies.

The first study, published in *Proceedings of the National Academy of Sciences (PNAS)* demonstrates how a new inhibitor discovered by The Waxman Lab at Mount Sinai can block metastasis as it differentiates Triple Negative Breast Cancer (TNBC) to a less malignant state.

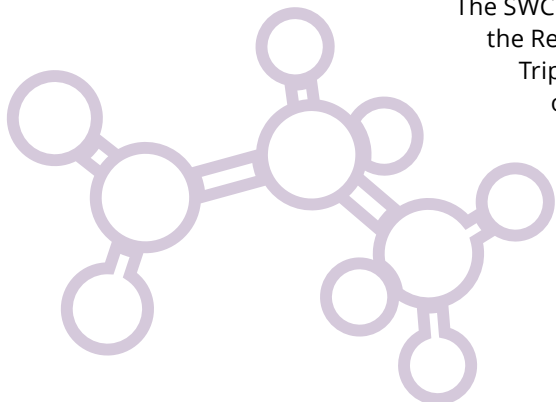


Dr. Robert Weinberg

The second paper, published in *Cells* describes treating TNBC with the Waxman inhibitor and a retinoid markedly prolonged life in a mouse model. This study could lead to clinical trials in the near future.

TNBC accounts for about 10-15 percent of all breast cancers which are more invasive, with fewer treatment options, and often have a worse prognosis. It is also more common in women younger than age 40, who are Black or who have a BRCA1 mutation.

Dr. Robert Weinberg, another SWCRF investigator from Whitehead Institute for Biomedical Research, Massachusetts Institute of Technology, is working on new immunotherapies to combat ovarian cancer. He and his team have discovered that the development of antibodies which specifically neutralize immunosuppressive proteins found in treatment-resistant ovarian tumors shows promise in blocking relapses, which is often associated with higher mortality rates.



The SWCRF Women's Cancer Research Program is supported, in part by the Revi Joseph Fund, the Gerald L. Lennard Foundation, and the Triple Negative Breast Cancer Foundation. For more information or to donate visit www.waxmancancer.org/womens-cancer.

WOMEN'S CANCER RESEARCH PROGRAM INVESTIGATORS:

Julio Aguirre-Ghiso, Ph.D.

Albert Einstein Cancer Center

Robert Casero, Jr. Ph.D.

John Hopkins University

Samuel Waxman, M.D.

Icahn School of Medicine

Christina Annuziata, M.D., Ph.D.

National Cancer Institute

Tyler J. Curiel, M.D., Ph.D.

Dartmouth Cancer Center

Robert Weinberg, Ph.D.

Whitehead Institute of Biomedical Research

Steve Baylin, M.D.

John Hopkins University

Doris Germain, Ph.D.

Icahn School of Medicine

Cynthia Zahnow, M.S., Ph.D.

John Hopkins University

Ayra Biragyn, Ph.D.

National Institute on Aging

Joel Neilson, Ph.D.

Baylor College of Medicine

Ming-Ming Zhou, Ph.D.

Icahn School of Medicine

Rafael de Cabo, Ph.D.

National Institute on Aging

Mary Stack, Ph.D.

Harper Cancer Research Institute,
University of Notre Dame

SAMUEL WAXMAN CANCER RESEARCH FOUNDATION RECEIVES COVETED 4-STAR RATING FROM CHARITY NAVIGATOR

SWCRF has earned the 4-star rating from Charity Navigator, America's largest independent charity evaluator. Charity Navigator guides responsible giving by evaluating the Financial Health and Accountability & Transparency of more than 8,000 charities across the country. Since 2002, Charity Navigator has only awarded the 4-star rating to organizations that operate in accordance with industry best practices and those that are among the most fiscally responsible.



"It's important that our donors trust that we're using their generous donations wisely to accomplish our mission to eradicate cancer once and for all," said William Sullivan. "Our 4-star Charity Navigator rating demonstrates our commitment to good governance and financial accountability. We hope that our supporters will feel proud and secure with their continued investment in SWCRF's research programs."

Charity Navigator accepts no advertising or donations from the organizations it evaluates, ensuring unbiased decisions, nor does it charge the public for this trusted data.

"The Samuel Waxman Cancer Research Foundation's exceptional 4-star rating sets it apart from its peers and demonstrates its trustworthiness to the public," according to Michael Thatcher, President & CEO of Charity Navigator. "Only a quarter of charities rated by Charity Navigator receive the distinction of our 4-star rating. This adds SWCRF to a preeminent group of charities working to overcome our world's most pressing challenges. Based on its 4-star rating, people can trust that their donations are going to a financially responsible and ethical charity."

YOUR DONATIONS AT WORK

SCIENCE FUNDED BY YOUR DONATIONS

Dozens of SWCRF-supported, high-impact studies were published in important peer-reviewed journals this past year. We do not have the space to list all, so here are just a few highlights. This scientific progress is only made possible by your generous support.



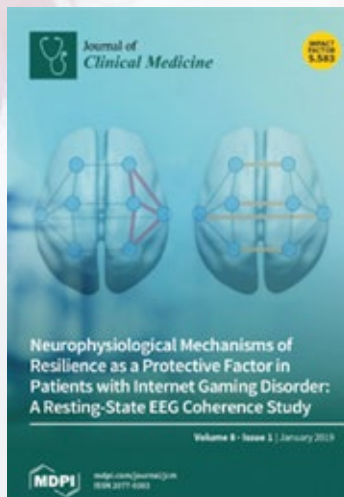
"Leukemic progenitor cells enable immunosuppression and post-chemotherapy relapse" – *Science*



"Age alters the oncogenic trajectory toward luminal mammary tumors that activate unfolded proteins responses" – *Aging Cell*



"Stromal changes in the aged lung induce an emergence from melanoma dormancy" – *Nature*



"Prostate Cancer Dormancy and Reactivation in Bone Marrow" – *Journal of Clinical Medicine*

"NASH limits anti-tumour surveillance in immunotherapy-treated HCC" – *Nature*



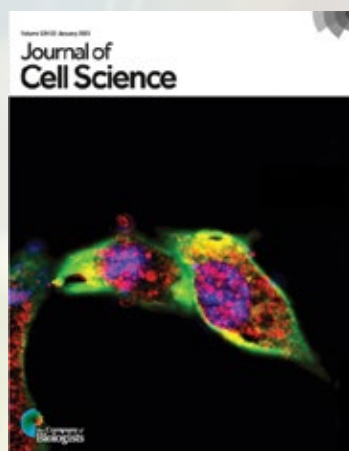
"Brain-specific inhibition of mTORC1 eliminates side effects resulting from mTORC1 blockade in the periphery and reduces alcohol intake in mice" – *Nature Communications*



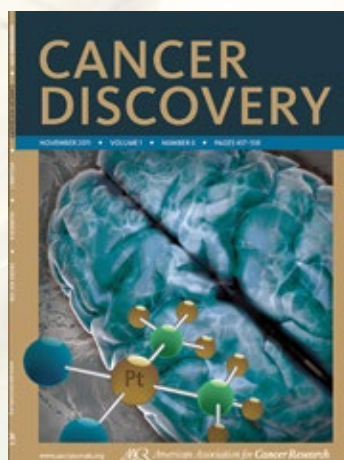
"Evaluating the impact of age on immune checkpoint therapy biomarkers" – *Cell Reports*



"Clinical and biological aspects of myeloid leukemia in Down syndrome" – *Leukemia*



"The pleiotropic functions of autophagy in metastasis" – *Journal of Cell Science*

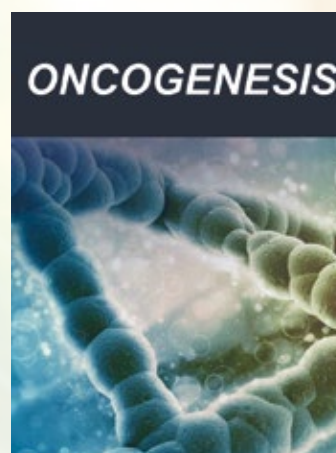


"Chemotherapy induces senescence-like resilient cells capable of initiating AML recurrence" – *Cancer Discovery*

"Genetically Defined Syngeneic Mouse Models of Ovarian Cancer as Tools for the Discovery of Combination Immunotherapy" – *Cancer Discovery*



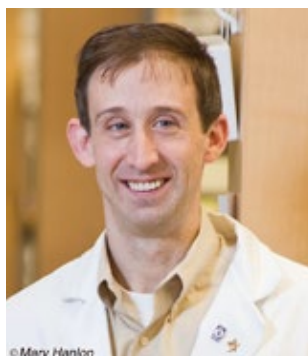
"Molecular characterization of hepatocellular carcinoma in patients with non-alcoholic steatohepatitis" – *Journal of Hepatology*



"Triptolide targets super-enhancer networks in pancreatic cancer cells and cancer-associated fibroblasts" – *Oncogenesis*

AND THE AWARD GOES TO

SWCRF continues to invest in the best of the best in cancer research. Once funded, our investigators become a part of the SWCRF Institute Without Walls™ and work together to develop novel treatments and advance our understanding of cancer. We are proud to announce that many of our scientists were recognized for their outstanding contributions this past year.



Dr. John D. Crispino

John D. Crispino, MBA, Ph.D., member, St. Jude Faculty, Director, Division of Experimental Hematology was a recipient of the National Cancer Institute's Outstanding Investigator Award.

The AACR Clowes Award for Outstanding Basic Cancer Research was awarded to **Ronald M. Evans, Ph.D.**, Professor and Director, Gene Expression Laboratory, the Salk Institute for Biological Studies.

Carl June, M.D., the Richard W. Vague Professor in Immunotherapy in the Department of Pathology and Laboratory Medicine in the Perelman School of Medicine at the University of Pennsylvania and Director of the Center for Cellular Immunotherapies at Penn's Abramson Cancer Center, was named the 2021 Dan David Prize Laureate.



Dr. Ronald M. Evans



Dr. Carl June

The American Chemical Society (ACS) presented **Alexander D. MacKerell Jr., Ph.D.**, Professor of Pharmaceutical Sciences at the University of Maryland with the ACS Award for Computers in Chemical and Pharmaceutical Research.

Kevan Shokat, Ph.D., Professor and Chair of the Department of Cellular and Molecular Pharmacology at the University of California, San Francisco (UCSF) was awarded The American Association for Cancer Research (AACR) Award for Outstanding Achievement in Chemistry in Cancer Research.



Dr. Alexander D MacKerell

Two of our investigators were also recognized for their mentoring and training new scientists in the fight against cancer.



Dr. Kevan Shokat

Congratulations to **Shai Izraeli, M.D.**, Professor and Director at Tel Aviv University Medical School and Director of the Hematology-Oncology at Schneider Children's Hospital, received the Mentorship Award of the European Hematology Association and the Israel Cancer Research Foundation's Professorship Award.

And **Jonathan Licht, M.D.**, SWCRF Chief Science Advisor and Director, University of Florida Health Cancer Center Director, received the American Society of Hematology Mentor Award.



Dr. Shai Izraeli



Dr. Jonathan Licht



\$10 MILLION INITIATIVE TO FUND 5 YEARS OF SWCRF RESEARCH LAUNCHED

Following a very successful five-year capital campaign that raised \$10 million in support of game-changing cancer research programs, such as the Gladstein Family Bladder Cancer Research Program and the U.S. and Israel Research Program in Collaboration with The Alan B. Slifka Foundation and the Israel Cancer Research Fund, SWCRF is embarking on a new vital, short-term, initiative to raise an additional \$10 million in just six months.

This ambitious objective is celebrating four significant SWCRF milestones: The 25th Anniversary of the Collaborating for a Cure Gala (November 17, 2022), the half century of Dr. Waxman's transformative work in cancer research and treatment as well as decades of mentoring SWCRF investigators, the transition of the Foundation's chairman of the board, Michael Nierenberg, after 25 years of dedicated service, and the expansion of the Aging and Cancer programs resulting in groundbreaking discoveries.

One hundred percent of contributions to this campaign will be specifically earmarked for cancer research and will sustain and help grow SWCRF's network of scientists for the next five years. As of the date of this report, we are thrilled to announce that nearly \$2 million has already been raised, including a very generous \$1 million gift from The Guston Fund.

The SWCRF Campaign and Development Committee, with board members Michael Nierenberg (Co-Chair), Ari Zagdanski (Co-Chair), James Frankel, Lewis Rubin, Howard Kurz, and Spencer Waxman, along with Dr. Waxman, Executive Director William Sullivan, and Jayme Koszyn of Koszyn & Company, continues to do its work while focusing on meeting the goals of this new \$10 Million Campaign.

We are optimistic that you will pledge your support and help SWCRF celebrate an exciting year to come. Please contact William Sullivan at wsullivan@waxmancancer.org to learn more.

SUCCESSFUL FIVE-YEAR COLLABORATING FOR A CURE CAPITAL CAMPAIGN ENDS

We are thrilled to announce that the five-year, Collaborating for A Cure Capital Campaign raised more than \$10 million for cancer research. These funds proved to be extremely timely by allowing SWCRF to continue funding our scientists at the same level despite the challenges of the COVID-19 pandemic.

Thank you to the generous supporters who contributed and made this campaign a huge success!

CAPITAL CAMPAIGN DONORS

The following donors share the Foundation's vision and belief in collaboration by generously funding the SWCRF Institute Without Walls™.

Philip Altheim
Rose M. Badgley Residuary Charitable Trust
Laura and Frederick W. Barney, Jr.
Vince Camuto Charitable Family Trust
Larry Cohen
Flo and Ethan Dmitrovski, M.D.
Lisa and Lee Einbinder
Gladstein Family/Marsha Lilien Gladstein Foundation
Gerstein Fisher
Fisher Family Ventures
Arminio Fraga
Bobby Frank
Jill and James E. Frankel
Gerard Lennard Foundation Inc.
Jane Gol
The Guston Fund
Jim Jacobs Charitable Foundation
Ping Jiang
Norman Kramer
Nancy and Howard Kurz
Rebecca and Sacha Lainovic
Lesley and Norman Leben
Marc J. Leder Foundation Inc.
Marc J. Leder - Sun Capital Partners Foundation, Inc.
Gerry Lennard
Cindy and Richard Leibovich
Ann Liguori
Matthew Lyons
Arlene and Reuben Mark - Mark Family Fund
Katina and Jeffrey A. Mayer
Musa and Thomas Mayer

Peeyush Misra
Peter Mondics
New York Athletic Club Athlete's Fund
Elin and Michael Nierenberg
The Theodore Rapp Foundation - In Memory of Margaret Hayes
Riva Ariella Ritvo-Slifka Ph.D. - The Alan B. Slifka Foundation
Dena K. Weiner and David Rozenholz
Wendy and Lewis Rubin
John Saparano
Bernard Schwartz
Mara and Baron Silverstein
Peter M. Smith
Dr. Robert C. and Tina Sohn Foundation
Alison and Charles Sorrentino
Guy M. Stewart Cancer Fund
Cesar A. Ricci and William T. Sullivan
Sandy and Mark Taub
Triple Negative Breast Cancer Foundation and Carol's Crusade for a Cure
Marion and Dr. Samuel Waxman
Julie and Scott Waxman
Bettina and Spencer Waxman
Sherry and Robert Wiener
Anne and Bruce Williams
Madeline Venn-Mitchell and Ari Zagdanski
Roy Zuckerberg

In addition to the donors listed here, numerous supporters generously made their donations to science at the 2018, 2019, and 2021 *Collaborating for a Cure* Galas.

PLANNED GIVING PROGRAM GAINS MOMENTUM

We are pleased to announce that after receiving our first legacy pledge from SWCRF board member Gerry Joyce in 2020, our Planned Giving Program has gained momentum. The Foundation now has six pledged planned gifts, including a leadership bequest from none other than Marion and Dr. Samuel Waxman.

We hope you will consider remembering SWCRF in your wills and trusts. Including SWCRF in your estate planning provides you and your family additional tax benefits for bequests, charitable trusts or annuities, retirement accounts or donor-advised funds.

For more information contact William Sullivan at wsullivan@waxmancancer.org

LEGACIES AND BEQUEST PROGRAM DONORS

The Estate of Peter Claman
The Estate of Frances Frey
Gerard F. Joyce
The Estate of Antoinette "Toni" Lotito
Marion and Dr. Samuel Waxman

DONOR SPOTLIGHTS

Support from SWCRF donors brings us closer to a cure every day. Through funding research programs, we are discovering better treatment options and improving technologies that detect cancer at earlier, more treatable stages.

We are honored to have the support of generous contributors and highlight a few below who are helping spearhead novel research towards a cure.

GARY GLADSTEIN

Gary Gladstein currently serves on the SWCRF Chairman's Council and previously on the board of directors, established the Gladstein Family Bladder Cancer Research program with a \$1 million donation.

The program is currently funding a pair of investigators: Dr. Philip Beachy's lab at Stanford University School of Medicine is exploring methods to reactivate differentiation signals to prevent invasive bladder cancer from occurring. And Dr. Jonathan Rosenberg and his colleagues at Memorial Sloan Kettering Cancer Center are investigating how bladder cancer forms by using animal models that replicate epigenetic changes in human bladder cancer.

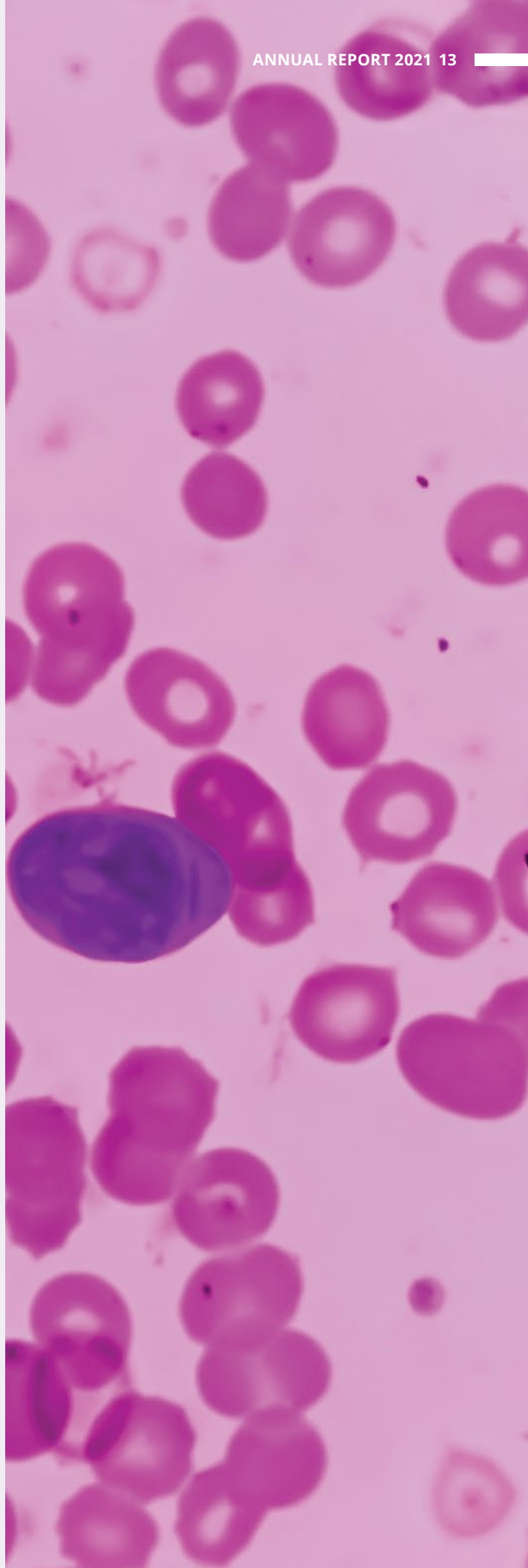
The Gladstein grant will allow SWCRF to fund additional bladder cancer research collaborations next year as well.

THE GERALD L. LENNARD FAMILY FOUNDATION

Donna Lennard, Stacey Lennard, Jennifer Meyerhardt, and Wendy Rubin, four sisters who have invested \$100,000 toward the SWCRF Women's Cancer Research Program, with a specific goal to fund innovative breast cancer research. Dr. Doris Germain, Professor of Medicine, Hematology and Medical Oncology at the Icahn School of Medicine at Mount Sinai was selected in the extensive search to be the recipient of this grant which will help further her important research for two years.

SWCRF has funded more than \$100 million in research since 1976. Scientific breakthroughs have led to new and less-toxic treatments and improved patient quality of life.

If you or your family are interested in naming a research grant, please contact William Sullivan – wsullivan@waxmancancer.org



LIVE, IN-PERSON EVENTS RETURNED

HUGO BOSS LAUNCH PARTY

As the official sponsor of the first Global Walk to Flatten the Cancer Curve and Fashion Cares Awardee at the Hamptons Happening, HUGO BOSS, Inc. hosted a special in-store launch party at their SoHo store, donating 15 percent from store sales to SWCRF. More than 100 people attended the event, including Stephan Born, CEO and President Americas of HUGO BOSS Fashions Inc.



GLOBAL WALK TO FLATTEN THE CANCER CURVE

Nearly 200 people participated in the first-ever Global Walk to Flatten the Cancer Curve, raising more than \$100,000 for cancer research. The virtual, 11-day fundraiser took place between June 30 and July 10 and inspired people to get healthier through movement by tracking daily activities such as walking, running, cycling, swimming, or even cleaning the house. Top fundraising teams and individuals were recognized at the 17th Annual Hamptons Happening.



17TH ANNUAL HAMPTONS HAPPENING

The 2021 Hamptons Happening, one of the most anticipated charity events on the Hamptons' summer calendar, returned to the lovely estate of Kenneth and Maria Fishel and raised more than \$360,000. As is the tradition, more than 300 attendees enjoyed a smorgasbord of delicious foods and beverages donated by some of the best restaurants, chefs, and beverage companies in NY. Honorees included HUGO BOSS Fashion, Inc.; Dr. Kenneth Mark; Natalie Cohen Gould, Co-founder of Come Back Cycle, Dir. of Wholesale, FP Movement; and Chef and Restaurateur David Burke.



8TH ANNUAL LADIES LUNCHEON

More than 150 guests attended the 8th Annual Collaborating for a Cure Ladies Luncheon honoring philanthropist Jean Shafiroff and featured a live fashion show by designer Kobi Halperin. Wearing their best summer fashions, the attendees enjoyed a lovely meal on the garden patio of T-Bar Restaurant in Southampton. Thanks to the amazing efforts of event chair Marion Waxman and co-chairs Erica Fineberg, Nancy Litman, Pamela Morgan, Lauren Silvers, and Helen Vaysman, the Ladies Luncheon raised \$100,000 for the SWCRF Women's Cancer Research Program.



39TH ANNUAL GOLF TOURNAMENT

The scenic Fresh Meadow Country Club in Lake Success, NY was the site of the 39th Annual Golf Tournament. The 75 golfers were not only treated to a fantastic autumn day, but also a delicious brunch and dinner reception. The event raised \$186,000 supporting collaborative, cross-institutional cancer research programs. Please join us in thanking a few of the major event sponsors: M&T Bank, Capital One, Glenwood Management, The Ann Liguori Foundation, Royal Abstract, and The Max B. Cohn Foundation as well as the event chairs, Dennis Herman, Chairman & CEO Beekman International Center, LTD. and Gary Jacob, EVP Glenwood Management.



MARATHON

SWCRF was an official Charity Partner for the TCS New York City Marathon. On November 6, two participants supporting SWCRF ran 26.2 miles and collected more than \$7,500 for cancer research. Congratulations to Robert Vaughn and Wildy Sirko for their amazing accomplishment and dedication to eradicating cancer.

24TH ANNUAL COLLABORATING FOR A CURE GALA

The 24th Annual Collaborating for a Cure Gala, aptly themed, Together Again, returned to Cipriani Wall Street on November 18th and raised more than \$4 million. More than 700 guests attended the elegant affair, which was once again hosted by CBS's Chris Wragge.

The gala celebrated groundbreaking research in the fight against cancer. The Foundation presented its first Breakthrough Science Award to Dr. Kevan Shokat, whose funded research paved the way for a new medication that shrinks lung cancer tumors by up to 50 percent with remarkably low toxicity.

Continuing its tradition of recognizing the fashion industry's longtime partnership to funding cancer research, SWCRF presented the Fashion Cares Award to Debra S. Waller, Chairman and CEO of Jockey International, Inc.

During the Invest in Science Appeal, Marc J. Leder, Co-CEO of Sun Capital Partners, announced a \$1 million match challenge to fund cancer research. Thanks to his inspiration, SWCRF donors met the match challenge and doubled this remarkable gift.

Attendees were also treated to a live concert by Jason Isbell and the 400 Unit with a very special guest, Warren Haynes.



2021 DONOR LISTINGS

THANK YOU

The following donors have shared The Samuel Waxman Cancer Research Foundation's vision and belief in collaboration by generously funding the Foundation's Institute Without Walls in 2020.

\$1,000,000+

Gladstein Family / Marsha Lilien Gladstein
Foundation Marc J. Leder
Marc. J. Leder Foundation, Inc.
Musa and Thomas Mayer
The Guston Fund

\$500,000-\$250,000

Lucy and Arminio Fraga
The Estate of Frances Frey
Elin and Michael Nierenberg
Plum Beach Foundation

\$249,000-\$100,000

Laura Zolak and James Demare
The Jim Jacobs Charitable Foundation
Dr. Andrew Jacono
Gerald L. Lennard Foundation, Inc.
The Estate of Antoinette "Toni" Lotita
Dena K. Weiner and David Rozenholc
Kristen and Nick Santoro, Jr.
Mara and Baron Silverstein
The Alan B. Slifka Foundation
Riva Ariella Ritvo-Slifka Ph.D.
Alison and Charles Sorrentino
Laurie and Joseph G. Steffa, Jr.
Triple Negative Breast Cancer Foundation
and Carol's Crusade for a Cure
Bettina and Spencer Waxman
Anne and Bruce Williams
Madeline Venn-Mitchell and Ari Zagdanski
Amy and Matthew Zisette

\$99,999-\$50,000

Alexandra Adame
Jack and Florence Berlin Foundation
Peggy and Peter Cherasia
Dentons US LLP
Fay Financial, LLC
Maria and Kenneth Fishel
Goldman Sachs & Co.
Goldman Sachs Philanthropy Fund / Gives
J.P. Morgan Chase
Jockey International
Leslie and Norman Leben

Leidos Biomedical Research
Matthew Lyons
Erin Diblasio Morano and Thomas Marano
Arlene and Reuben Mark - Mark Family Fund
Maxx Properties, Tenshore Realty, Ltd.
Matthew McQueen
Jake and Martin Milgilara
Peter Mondics
The Theodore A. Rapp Foundation - In
Memory of Margaret Hayes Adame
Wendy and Lewis Rubin
Skadden Arps Slate Meagher & Flom
Sourcepoint
Pamela and Laurence Tarica
Sandy and Marc Taub
Taub Family Companies
Sherry and Robert Wiener
Xome Holdings Inc.

\$49,999-\$20,000

Auction.com
Erika and Joseph Ades
AMC First - American Mortgage Consultants
Bank of America
Barclays North America
Jack and Florence Berlin Foundation
Black Knight Infoserv, LLC
Maia and Jonathon Bobkow
Eve and Brant Brooks
Heather R. and Brian Carosielli
Citi Business Services
Clear Capital
Consolidated Analytics
Cravath, Swaine & Moore LLP
Credit Suisse
Cushman & Wakefield Inc.
Sanjiv Das
Domus Property Management
Thomas Durkin
Lynn and Wesley Edens
Ernst & Young U.S. LLP
Fay Financial LLP
Jill and James E. Frankel
Focus New York
Genesis Capital
Britnie and Gerard George

Good Hill Partners LP
Jody Gorin
Beryl and Bradley Gross
Guidehouse
Mary P. Haggerty
Ali Haralson
Nancy Loving and David Hinkelman
Liz Insley
Gerard Joyce
Erin Keller
Kinsmen Property Group
Hunton Andrews Kurth LLP
Robin Lathrop
Tammy and Jay Levine
Sherri and Alexander S. Libin
Longhill Charitable Foundation, Inc.
M&T Bank
Katrina and Jeffrey Mayer
Mayer Brown LLP
William R. McGee Jr.
Brian McGrath
MFA Financial Inc.
Jacques Moret, Inc.
Morgan Stanley
David Nadasi
NewRex LLC
Ali Nierenberg
Nomura Securities International, Inc.
Ocwen PC
Ohio National Financial Services
Nancy and Craig Overlander
The Mark Foundation for Cancer Research
Randy Reiff
RBC Capital Markets
Ingeborg and Ira Rennert
Retention Marketing Newrez LLC
RSM U.S. LLP
Dr. Arthur Riggs
Blair and Louis Rosenfeld
Wendy and Lewis Rubin
Sidley Austin LLP
Situs AMC
Dr. Robert C. and Tina Sohn Foundation
Sterling National Bank
Tsai Fan Yu Foundation
Valery Joseph Salon

Marion and Samuel Waxman, M.D.
Sharon R. and Joshua Weintraub
Aaron Welsh

\$19,000-\$10,000

Duane Andrews
Sidney Austin LLP
Laura and Frederick W. Barney, Jr.
Benevity Community Impact Fund
Ryan Bernholz
Margaret S. and John D. Brewer, Jr.
The Brewer Family Foundation
Capital One Commercial Banking
Joseph Casper
Citi Business Services
Covius Services LLC
Flo and Ethan Dmitrovsky, M.D.
John Draghi
Michael Dryden
Linda and Robert Eichler
Jay Eisenhofer
Elizabeth and Michael Fascitelli
Fascitelli Family Foundation
Edward Fay
Mark Fedyk
Kerry and Andrew Fineberg
Fortress Investment Group
Bess Freedman
Gail and David Furman
Jani Gerard
Alyssa and Cliff Greenberg
Michael Hight
Ingram Book Company
Cathy and Gary Jacob
Ed Kaminsky
Scott Kane
Carol Kekst
KPMG LLP
Helen and Roger Krone
Amy and Josh Kuriloff
Nancy and Howard Kurz
Lamando Family Foundation
The Tammy and Jay Levine Foundation, Inc.
Ann Liguori
Ann Liguori Foundation
The Litwin Foundation
LoanCare LLC
Longhill Charitable Foundation Inc.
Howard Lorber
Lorber Charitable Fund
Jessica E. Lynch
Aliza and Steven Major
Mayer Brown LLP
Erika and Mark Melchiorre
John O'Keeffe
Nancy and Craig Overlander

Ephraim and Gail Propp Family Foundation
Susan and Elihu Rose
Jesse Roth
Maheshwar Saireddy
Leah P. Sanzari
Christopher M. Scott
Schwab Charitable Fund
Jean and Martin Shafiroff
Deborah Kamali and Dr. Kevan Shokat
David Shorenstein
Darren Shames
Adam Siegel
Erin and Andrew Sloves
Adam Smith
Iris and Michael Smith
Peter M. Smith
Farrell and Steven Starker
Sara and Jay Sullivan
Cesar A. Ricci and Williams T. Sullivan
Tenshore Realty, Ltd.
Greenberg Traurig
Donna and Alan L. Tyson
Amy and Jeffrey Verschleiser
Alison and Richard C. Volpe
Varun Wadnawan
Julie and Scott Waxman
David Welsh
Mindy and Mark Werner
The Winston Foundation
Tsai Fan Yu Foundation

\$9,999-\$5,000

Andrew Ainsa
American Endowment Foundation
American Gift Fund
Amgen, Inc.
Amherst Pierpont
AmTrust
AON Corporation
Christine Arlotta and Mario Pecoraro
Aspen Grove Solutions
Bank of America Charitable Gift Fund
Melody and Claude Bernstein
Jill Bernstein
Thomas Britt
George Brommer
Brown Harris Stevens
Robert Caldwell
Castle Oak Securities
Kevin Capes
Joseph Cesare
Robin and Steven Chotin
The Chotin Foundation
Mary Stone and Channing Creecy
Community Foundation of New Jersey
Concord Health Partners

Conrad Dequadros
Jane C. Dietche
Cathy Donzila
Robert Durden
Karen X. Fang
Hilary and Joseph Feshbach
Richard Feurman
Robert Fishbein
Fishbein Family Interstitial Cystitis Research
Foundation
Christopher Flanagan
Foxy AI Inc.
Maxine and Mark D. Friedman
David A. Garner
Kevin Gately
Cheryl L. Glory
Goldfarb & Fleece LLP
Victoria Goldman
Goldman Sachs & Co. Matching Gift Program
Jeff Gravelle
Brian Gluck
Natalie Cohen Gould
Guaranteed Rate
Guardian Asset Management
Haukur Gudmundsson
Kobi Halperin
Linda and Dennis A. Herman
Nicola Heryet
Jennifer and Patrick Higgins
The David Hochberg Foundation
Linda Hsu
Hugo Boss Fashions, Inc.
Timothy Jay
Robert Johnson
Chris Jones
Pat Jones
Deborah D. Kamala
Orital Karelic
The Jim Keller Family
Katsky Korins LLP
Sanjeev Khanna
Kleinberg, Kaplan, Wolff & Cohen, PC
Kevin Klose
Jamie Koff
KPMG LLP
Corey Labadorf
Dan Leader
Lessen Inc.
Life Fusions Corp.
Lift Strategic Partners
Janet and Avery Lipman
Nancy Litman
Felicia Grumet and Mitchell Levine
Rafael Llopiz
Local 628 Yonkers Firefighters
Joseph Lopardo
The M & T Charitable Foundation

William Magee
 Dr. Kenneth Mark
 Morris R. Gaines and Richard H. Martin
 Jerrard Mavellia
 Max B. Cohn Family Foundation
 Michael Mazzei
 Roni and Charles McGuffog
 Rosemary McElhannon
 Jay McKee
 Jonathan Meltzer
 Laura Merolle
 Hyewon Miller
 Milwaukee Bucks
 Morgan, Lewis & Bockius LLP
 Jessica and Joshua Muss
 National Philanthropic Trust
 New Ground Promotions Corp
 Amr Nosseir
 Todd Patrick
 Pay Pal Giving Fund
 Arnold S. Penner
 Prime Meridian Moving
 Kenneth Ramos
 David Rampone
 Patricia and James A. Read
 Ellen Rosenberg
 Anne and Hank Ross
 James Ross
 Shane Ross
 Ross Stores, Inc.
 Royal Abstract of New York LLC
 Ruth / Winkleman Wender Foundation
 Leslie and Edward R. Sacks
 Michael J. Schwartz, CPA
 Schiff Hardin LLP
 SeaChange Capital Partners Inc.
 Nicholas Seminara
 Mady and Allen Siegel
 Situs AMC
 Jill and Richard Spitz
 James Stanton
 Estera L. Stawski
 Tradeweb Markets LLC
 Greenbreg Traurig
 James Tuohy
 VMMA Construction
 Chetan Vohra
 Scott Waxman Agency, Inc.
 Debbie and Richard Wilpon
 Charles Wolff
 Mr. Yirmiyahu

\$4,999-\$1,000

Abner & Mildred Levine Foundation
 Accenture Federal Services
 Access Capital Foundation

Affiliated Adjustment Group
 Alliance Bernstein Matching Gifts Program
 Hayley and Warren Alstodt
 Joan and Lawrence Altman
 Karen Amster-Young
 The Anikstein Family Foundation Inc
 Anon Charitable Trust
 Judith and Alan Appelbaum
 Zachary Aronson
 Clint Arrosmith
 Julie and David Auclair
 Avery Dennison Retail
 Information Services LLC
 Bank of America Matching Gifts Program
 Phoebe Barnard
 Berdon LLP
 Antonella Bertello
 Eleanore and Robert Bass, M.D.
 Gordon Bernstein
 Jon Bernstein
 Anthony Beshara
 Biener Auto Group Inc.
 Ranjit Bhattacharjee
 Bloomingdales
 Bluecore, Inc.
 Alan Blum
 Susan and Edward Blumenfeld
 Deborah Blumenfeld
 Borah, Goldstein, Altschuler,
 Nahins & Goidel, P.C.
 Boscov's Department Store, LLC
 Herbert Botwinick
 E. Stan Bowers
 Bradley LLP
 Jason Breitstone
 Brescome Barton
 The Bristol Assisted Living
 Brobston Group
 Sheri Bronstein
 Eric Brophy
 Eugene Brown
 Maya Burkenroad
 Jeffrey Butchen
 Timothy Cameron
 Vincent Cammarata
 Bonnie and David Cantor
 Elizabeth Carpenter
 Capitol Husting Company Inc.
 Robert J. Caslow
 CBRE
 Jason Chalik
 Pam and Lee Charles
 Chatham Asset Management, LLC
 Daniel and Rhonda Chestler
 Micky Chun
 Stephen Cianci
 The Claman Family

Paula and Richard Cohen
 Commerce Tools
 Fran Condon
 Michael Conti
 Edward Conway
 Julie Copeland
 Joan and Joseph Coppotelli
 D. J. /Colby Co., Inc.
 Kim Dale
 Matt and Cecilia V. Danilack
 Jonathan Davis
 Jack Delaney
 Diane Delena
 Susan and William Dellal
 Robert Densen
 Deutsche Bank Americas Foundation
 Flo and Ethan Dmitrovsky
 Thomas J. Doherty
 Alina and Rich Doveve
 Doyen Consulting Group
 Mathew Durnan
 Eclipse Telecom
 Gabrielle Eichstaedt
 Jesse Elhai
 Nicholas R. Elliot and Scott M. Lazarz
 Sylvia and Robert Elman
 Encompass Group, LLC
 Fabric to Finish Inc.
 Patricia Fasano
 Fedway Associates
 Michael Feinstein
 Phil Felice
 Erica Fineberg
 Leah Fischler
 Bradley Fishel
 Herbert S. Fitz Gibbon II
 Dustin Fleishman
 Sheila Fontaine
 Food Entertainment
 Jacqueline Frank
 Maxine Frank
 Craig Friedman
 Staci Friedwald
 Harrison Fukutomi
 Carol Fuller
 GA Financial Company
 Georgia Crown Distributing Company
 Ken Geiger
 Robert Gelfond
 Gerstein Fisher
 Massimo Giacomini
 Joseph H. Girven
 Alex Glauber
 Mark Gleason
 Sonia and Michael Gleit
 Global Atlantic
 Barbara and Alan J. Goldberger

Laurie and Jeff Goldberger
 Stephen Golden
 Lesley Goldwasser
 Dmitry Goncharov
 Jeanette L. Gorgas
 Adam Gould
 Gotham City Networking Foundation
 India Graham
 Kristen A. Gray
 Jonathan Grebinar
 Jeff Gropper
 Mimi Grotto
 Arnold M. Gumowitz
 Eric Hadar
 Lisa and Jeffrey Hagler
 Amy and William Handwerker
 Joanie Genirs-Harrington and James J.
 Harrington
 Ellen R. Harris
 HealthEZ
 Elisa and Robert Hecht
 Michael Hegarty
 Elissa Held
 Michele Herbert
 Lisa D. Herbert
 High Five Foundation
 High Five Foundation II
 Tom Hiner
 Jeremy Hoffman
 Michael Hokin
 Richard Horowitz
 Howard Horowitz
 Regina Houston
 Suzanna Houston
 HSBC Private Bank
 Evonne Huang
 Michael Huang
 Lucia Hwong Gordon
 Ichan Enterprises
 Integrated Distribution Services, Inc.
 J. Schmid
 JPMorgan Chase Foundation
 Matching Gift & Volunteer Programs
 Susan and Stuart Israel
 Florence and Evan Janovic
 Robert Jayne
 Jill Johnson
 William H. Johnston
 Charles D. Johnston
 Steve Jones
 Noelle Kahan
 Terri Kahan
 Anna Kahn
 Victoria Kahn
 Kaled Management Corp.
 Michelle Kalsi
 Jaclyn and Gerald P. Kaminsky

Mary Y. Kantor
 Robin Kaplan
 Josh Kappel
 Maddee Kassimir
 Cheri Kaufman
 Stacey Kelly
 Evan Key
 Robert Kinberg
 Tracey Kleckner
 Peter Klimuszko
 Elizabeth Klingenberg
 Karen Kloop
 Daniel Knight
 Harvey S. Knopman
 Deborah Knotts
 Weston Knowles
 Norman Kramer
 Diane Kranz
 Regina Kravitz
 Roslyn Burt Kremsky
 Ellen Antonucci and Steven Krieger
 Betsy and Eric L. Kriftcher
 Gudmundur Kristjansson
 Jill and Michael Lamoretti
 Carey F. Lathrop
 Marcia and David Lavipour
 Janine Lee
 Milena Resca and Tiziano T. Legnaro
 Lenzing
 Craig Levitz
 Joanne and Jonathan D. Licht, M.D.
 Jordan Licht
 Maribel Lieberman
 Robert Lohman
 Elena Lubarskaya
 Abigail Lundmark
 James P. MacGilvray
 Ronald E. Madden
 Leiana Maiberg
 Magnolia Bakery
 Andi and Jonathan Mandell
 Ann and Jeffrey Mann
 Anjali and Satish M. Mansukhani
 Barbara and Frederick Marcus
 Charles Marks, D.D.S.
 Morris Marshburn
 John Mattioli
 Kaitlyn Mauritz
 Jill and J. Jay Mautner
 Jason McCarthy
 Michelle McComb
 McDowell Foundation
 Roni McGuffog
 Jerry McManus
 Sean Mctigue
 Andrea Melchiorre
 Craig M. Meltzer

Merrill Lynch Wealth Management
 Ronald Miksiewicz
 Mile Square Insurance Agency
 Meri Miller
 Helga Milman
 Castor Miranda
 John Moehring
 Carlos Molina
 Pamela Morgan and Michael Trokel
 William Morosse
 Spencer Mosness
 Rodney Moss
 Movado Group
 Ryan Mullaney
 Erik W. Muller
 Susan Murtha
 Jack Navarro
 Taylor Neiditch
 George Neilson
 New York Flooring Corp
 Stokes Nielsen
 Jonny Nierenberg
 Hansel Nieves
 Nilit America Inc.
 Adele Nino
 Nancy and Daniel M. Nolan
 NY Kids Dentistry and Orthodontics
 Chris O'Brein
 Greg O'Connell
 Norman Oblon
 Aaron Ong
 John Onuscheck
 Elissa and Daniel J. Ordan
 Kerry Orent
 Steve Orr
 Lauren Osborne
 Debra Paley
 Balasubramanian Panchanadeswaran
 Gregory Pappajohn
 The Par Group
 Paramount Beauty Distributors
 Grace Park
 Pasternak Family Foundation
 Marci Pere
 Marci and Glenn Pere
 Pershing Advisor Solutions
 Evelyn and Michael Petteruti
 PFRANKMD Heals Foundation
 Dr. Lee Phillips
 Brian Pidgeon
 Mark Pineau
 Mary Ann Portell
 Elizabeth M. Porter
 Gail Propp
 Perry Rahbar
 Deborah Raiman
 Rampart Benefit Planning

Josh Ratner
 Raymond James Financial, Inc.
 Michael Reed
 Rashaan Reid
 Retailers Alliance Foundation of New York
 REX
 Peter Riccio
 Haydn Richards
 Rachel Rivkind
 RJ Industries
 Brittain Rogers
 Scott Romanowski
 Gary Rombough
 Christina Rose
 Tara Rosenblum
 Martin Rosenman
 Richard Rosenthal
 Alan G. Rosmarin, M.D.
 Hannah Ross
 Robert Rotanz
 Mark Rothschild
 John Ryan
 Paul Saake
 Saks Incorporated
 David Salamon
 Mona Salib
 Nicole Salmasi
 Randi Saltzman
 Austin Sandler
 Ilene Sands
 Santander Commercial Banking
 Samantha Santiago
 Edmond A. Sassoon
 Elizabeth Sawi
 Steven Schachter
 Laurie and Charles Schaffran
 Randi Schatz
 Jill Schildkraut-Katz
 David Schroeder
 Hunter E. Seaver
 Kristen Segal
 Serenity Token LLC
 ServiceLink
 Mehul Shah
 Ryan Sheehan
 Brian Sherman
 Signature Bank
 Cynthia and Tony M. Shogren
 Melanie Shoreinstein
 Ron Shoshany
 Nir Shuminer
 Peter Sibia
 Stephen B. Siegel
 Ian Sigalow
 Lauren Silvers
 Marc Simpson
 Rajinder Singh

Lara and Phil Sivin
 Kimberly Slawek
 David C. Smith
 Deborah Sobczak
 Solomon Partners LLP
 Dr. Carla Solomon
 Mr. Jim Spencer
 Alicia and Martin St. Pierre
 Ryan Stark
 Michael Statile
 Stawski Partners
 Moira Steffen
 Ernie Stefkovic
 Brian Steiner
 Clifford A. Sterling
 Sharon Sternheim
 Phyllis Stevenson
 Nicla and Andrew J. Taddei
 Jeff Tarr
 Thistle Giving Fund
 TIAA Mortgage & Real Estate Div.
 Barbara Tober
 Dara Tomanovich
 Marc J. Toscano
 Tracy and Jerry Turco
 UBS Investment Bank
 George Umansky
 Daniel Van Hall
 Vanderbilt Appraisal Company
 Eduardo Varela
 Brad Vasto
 Helen Vaysman
 John Velaoras
 Visual Sonoics Inc
 Leesa Wagner
 Cynthia Wainwright
 Andrew Wang
 Marc Warren
 Robert Wasmund
 Renee and Theodore Weiler
 David Weiner
 Andrew Weinstock
 Jenny and Michael Weisburger
 Barry Weiss
 Mikey Weiss
 Wells Fargo
 Sharon Wilkes
 Brady O. Williams
 David Williams
 Lisa and Mitchell Winter
 Wipro Opus Risk Solutions
 Georgia Witkin
 Eric Wittenberg
 Whispering Bells Foundation
 Tad Wolkin
 John Wopperer
 World Wide Land Transfer

Michelle Worth
 Jung Yoon
 Marcos Zalta
 Brooke and Nathan Zarkowsky

\$999-\$500

Cheguevara Afaneh
 Ludovica Amato
 Kevin Amendola
 Paul Atha
 Alexandra Baker
 Moris and Lana Bakhsh
 Jason Barash
 The Basse Family
 Lidia Bastianich
 Marina Bejarano
 Lisa Berg
 Yana Blackwelder
 Roger Blumencranz
 Carolyn and Mason Bolt
 Beatrice and Douglas Broadwater
 William Brobston
 Margaret Browne
 Kaitlyn Buckley
 Carol I. Buckmann
 Timothy Burch
 Richard D. Calderon
 Bruce and Claire Chanenchuk
 Nicholas Chapman
 Betsy Cohen
 Andrew Cohen
 Maria D. Colucci
 Congregation Kehilath Jeshurun
 Madeline and Thomas A. Conway
 Christine and Nicholas A. Cortese
 Jennifer Counihan
 Lisa Czelatdko
 Melissa Dabbara
 Jesse Dallas Dean and Evan Elisseou
 Delta Sigma Phi and Phi Kappa Psi SUNY
 Binghamton
 Denise DeLuca
 Timothy Derham
 Deborah Dion
 Dominion Energy
 Narveen Dosanjh
 Sandra K. Dugoff
 Katie Dunn
 Debra Edelman
 Teresa and James Eggers
 Lisa and Lee Einbinder
 Alissa Emerson
 Allison Essner
 John Eyster
 Robert Federman
 Stefanie and Paul Feidelson

Dean Feldman
 Deborah Feyerick
 Maria Figueroa, MD
 Finer Fire Restoration Group
 Eric Flamm
 Susanna Fodor
 Melanie Fox
 Susan Frank
 Stacy Friedman
 Kelly A. Fuchs
 Jane Gamutan
 Davide Gervasi
 Anna Gerzon
 Mary Gill
 Laurie W. Gilmore
 Claire Gilvar
 Judith Gische
 Caren Glassman
 Terry Glidden
 Edward Gordon
 Mr. and Mrs. Jesse Gottlieb
 Michael Goworek
 Kimberly Greene
 Ben Grossman
 Ludmila Gudz
 Zachary Halem
 Lee F. & Claire E. Hager
 Family Foundation Inc.
 Joseph Hardee
 Ellyn Harris
 Maureen A. Hayes
 Paul Hazen
 Stewart Hescheles
 Tania Higgins
 David Hochberg
 Camila Hojda
 Dana and Michael Hubbe
 Linda Iannacci
 Wendy Ingber
 Eartha Johnson
 Wendy Jordan
 Freddi and Harvey Kadden
 Leslie Keidan
 Iris Keltz
 Alan Kersner
 S. Khanna
 Tere Kim
 Penny and David J. Klein
 Stephen Klym
 Shari and Gary Korn
 Mr. and Mrs. Jack Korzelius
 Julie and Andrew Kramer
 Suzan Kremer
 Emma Kurz
 David S. Landay
 Danile Lanzara
 Danielle Lavetan

Seth O. Lax
 Arlene Lazare
 Jeff S. Lender
 M.I.R. Construction Group
 Jessica Mackin-Cipro and Joe Cipro
 Steven Mann
 Robert Mann
 Robert Manning
 Sam Marchiano
 Morten Marott
 Preeti Mattoo
 McCAlla raymer Leibert Pierce, LLC
 Dylan T. McKeon
 Elena Meehan
 Rudolph Melchiorre
 Sue and Terrence Meyers
 Ruth Miller
 Sherri Miller
 Scott Mills
 Joshua Milstein
 Keith Mobilia
 Mogil Organization
 Fayez Mohamood
 Mar Morosse
 Patrick M. Murphy
 James W. Murtagh
 Kimberly Ann and Stephen James Muto
 Joel Neilson, PhD
 James Neyland
 Laurie Nicoletti
 Elizabeth Noble
 Carol Opton
 Anka K. Palitz
 Michael Panarello
 Joslin Paradise
 Deanna Passarelli
 Jonathan Patricks
 Justin Peck
 Louise Phillips Forbes
 Carol Pick
 Brian Pidgeon
 Pledgeling Foundation
 Jeffrey Pollock
 Vincent Polsinelli
 Ruth Simon and Thomas Polton
 Diane Poole-Chessin
 Diana Porges
 Meghan Postel
 Dennis B. Poster
 Noah Qua
 Sara Rafael
 Ruth Raisman
 Richard Rathe
 Robert Rawdin
 Bianca Regan
 Andrea and David Reiser
 Gail Reisin

Jeanne Rizzo
 Lauren and Bob Roberts
 John Rohs
 Lawrence Roman
 Roberta Rosenblum
 Shelley Rosensweig
 Jodi and Robert D. Rosenthal Family
 Foundation
 Marc Roth
 Leesa Rowland
 Michael Royce
 Michelle Russell Johnson
 Paul Saake
 Suzanne Sabet
 Hormoz Sabet
 Barbara S. Samuelson
 Svetlana Sands
 Mitchell Schear
 Elana Schoppmann
 Cori Seaberg
 Kelly Sennott
 Snejana Sevak-Wizman
 Julia Shlovsky
 Jay B. Shows and Spyro Christie
 Randi Siegal
 Henry Siegel
 Keith Singer
 David Sklar
 Gary M. Slutsky
 Alfred Smith
 Nicholas F. Sorice
 Oliver Spurgeon, III
 Lucy and Walter L. Stackler
 Elizabeth Steimberg
 Dan Stock
 Jonathan Strum
 Daniel and Sandra Teitelbaum
 Noah Tepperberg
 Jack Thompson
 Kimberly Till
 Elena Ulansky
 United Way of Central New Mexico
 Jon Van Gorp
 Moshe Vardi
 Robert Vaughn
 Brian Vaughn
 Evan Vieira
 Frank Vitarelli
 David Vorchheimer
 Kathleen Walsh
 Michael Waxman
 Evelene Wechsler
 Celeste Wecker
 Paul Wein
 Carl B. Weisbrod
 Andrea Wernick
 Marcy and Paul Whitman

Brian Wiele
Elizabeth Wolfe
Bette and Harold Wolfson
Kirna Zabete Inc.

In-Kind Donors

107 Beauty
59E59 Theaters Production
75 Main
a la mode
Alaina Alvarez
Alex Mills
Alice + Olivia
Almond
Amali
Amouage
Angelo David
Ani Villas
Another Tomorrow
Antonella Bertello
Arc Angel Jewelry
Argento South
Ari Zagdanski
Arlotta Cashmere
Arlotta Food Studio
Avra
Babby & Satchen
Backal Hospitality Group
Bar Marseille
The Baker House 1650
Bareburger
Barry's Bootcamp
Beauty & the Broth
The Betsy Hotel
Biener Auto Group, Inc.
Bimble
BioTech Life Sciences
Bisous and The Bay
Blade
Blood Monkey Gin
Blue Tree
Blumera
BUF Personal Training
Bobby Vans
Body Evolutions NYC
The Bridge
Bridgehampton Breeze Wine
Bryan Griffin
Calissa
Capital Theater Port Chester NY
Carelle
Centric Brands
Cesar Ricci
Chase Willman Fitness
Chef Amanda
Chef Bryce Shuman

Chef David Burke
Chef Hong Thaimmee
Chef Julian Medina
Chef Michael Lomonaco and Porterhouse
Centro Trattoria
Cipriani Vault
Clarkson Ave Crumb Cakes
Club Pilates
The Clubhouse East Hampton
Comeback Cycle
CorreBarreFit
Coty Inc.
Craig Overlander
Dancebody
Daniel Boulud / Daniel
David Burke Hospitality
Demarchelier
Devon Halsey
Disney Theatrical Group
DJ Jet Set
Dr. Mauro Romita
Dr. Paul Frank
DVF
Elea
Elie Tahari
Entourage
Erika and Mark Melchiorre and family
Estée Lauder
Evolveast Yoga
Fabrinique
Farfetch
Feinstein's / 54 Below
Fine & Rare
Focus New York
FP Movement
Free People
Fresh & co
Fresh Meadow Country Club
Friars Club
Friedman / Rosenthal Team
Funny Girl on Broadway
Gallaghers Steakhouse
Garde Robe
GAS Costume Jewelry
Giorgio Armani
Godiva
Golden Pear
Greenwich St. Jewelers
h2one
Haley Swindal and Jack Tantleff
Halo Sport Water
Hampton Hills Golf Course
Hampton Jitney
Hampton Racquet
Hamptons Handpoured
Hamptons Water
Harry Carson

Harry's Table by Cipriani
Hector Rodriguez
Helen Vaysman
Heritage Auctions
Herradura Tequila
Hervé Leger
Hidden Gem
HiWave
House of Wolves
Howard and Nancy Kurz
Hudson
Hudson National Golf Course
Hugo Boss, Inc.
Il Buco al Mare
Il Gufo
Imagine It Done
ISDIN
J. McLaughlin
Jacob's Pickles / Maison Pickle
James Lane Post
Jason Isbell and the 400 Unit
Jay Sullivan
Jets Coaches Club
Jockey International
Johnson's Popcorn
Joseph Steffa
Josh Beckerman
Julie Lindh Skincare
Kathy Kuo Home Southampton
KK Sweat
The Knife Gal
Knockout Beauty
Kobi Halperin
Kramer Portraits
Kurly Kurtosh
Lakebound
Lawlor Media
Le Bernardin
Leidos Biomedical Research
Lexie Heaney
Liberty National Golf Club
Lifted
Live Nation
Love Binetti
Love Shack Fancy
Loverboy Hard Tea
Lymber
Maison Pickle
Manu Cashmere
Mann Publications
Margaritaville
MarieBelle Chocolates
Mark Prins
Marks Off Madison
Marvin Scott
Masterpiece Printers, Inc.
Max Mara

Mercer Street Hospitality
 The Met
 Meurice Garment Care
 Michael Snell / Mjs Groupe
 Milos
 Moret Group
 Mouth Party Caramel
 Movado
 myGEMMA
 Nancy Litman
 Navy Beach Restaurant
 Neiman Marcus/ La Mer
 Neinstein Plastic Surgery
 New York City Police Department
 New York Vintners
 NHL
 NJ Devils
 NY Giants
 NYC Adventure Club
 Old Stove Pub
 Out East
 Palm Bay International
 Patience Stone
 Pearle Vision
 Penumbra Foundation
 Peserico Boutique
 Peter Thomas Roth
 Pizza Loves Emily
 Platinum Poire
 Pompette
 POTUS On Broadway
 Quaker Ridge
 Quality meats
 Rao's Italian Restaurant
 Ramy Brook
 Rebecca Minkoff
 Red Farm
 Regina Kravitz
 RiK Design
 Ristorante Babbo
 Robert Graham
 ByRobin
 Rumble
 Rust & Gold
 Sag Harbor Florist
 Saks Fifth Avenue
 Sarah Wragge Wellness
 Schiaparelli
 Sen
 Serafina East Hampton
 Set Points Tennis
 Sharon Wilkes
 Silent Yacht
 Simple Vodka
 Skinfluence
 Sleep No More / McKittrick Hotel
 South Fork Bakery

SU Design & Accessories
 Summary
 Swoon Lemonade
 Tbar Steak & Lounge
 Tana Chung
 Taub Family Companies
 The Linhart Smile
 The Restaurant Group
 Tiffany & Co.
 Tiki Chick
 Tracy Anderson
 Trattori L'Incontro
 Trublooms
 Ungaro Paris
 Union Sushi and Steak
 Valery Joseph
 Veronica Beard
 VERSA
 Vicolina Restaurant
 Vogue
 Warren Tricomi
 Washington Square Hotel / North Square
 Restaurant
 Woodford Reserve
 YildizAylin.com
 Zac Zac Posen
 Zadig and Voltaire

In Honor of

James Frankel
 Elin and Michael Nierenberg
 David Rozenholz
 William T. Sullivan
 Marion and Samuel Waxman, M.D.

In Memory of

Arlene Amster
 Elizabeth "Betty" Arlotta
 Dale Claman
 Anne Jameson and Jay Eisenhofer
 Marshall Insley
 James Keller
 Sharon Muir-Kerner
 Kevin Jurice
 Mrs. Roslie Meltzer
 Allen I. Milman
 Margorie A. Rowe
 Sounie Rounick
 Miriam Sharon

SWCRF Collaborator Members

Dr. Bruce and Clair Chanenchuk

A Note to Our Supporters

This list includes all gifts made to the SWCRF between January 1, 2021, and June 30, 2022. We have carefully reviewed all donations to ensure proper recognition. We make every effort to follow the donor's preferences for recognition when compiling this list. If you prefer to have your name listed differently in the future, please contact us. If we have made an error, we sincerely apologize and ask you to bring it to our attention. Please contact us at 212-867-4502 so that your record may be corrected. Thank you.

FINANCIAL STATEMENT

July 1, 2019 — June 30, 2020 audited

REVENUE	JUNE 30, 2021	JUNE 30, 2020	JUNE 30, 2019	JUNE 30, 2018	JUNE 30, 2017
Contributions	\$ 34,000	\$ 76,000	\$ 208,000	\$ 382,000	\$ 548,000
Program Grants	830,000	2,945,000	2,028,000	1,813,000	620,000
Event Income	1,584,000	2,315,000	1,819,000	1,445,000	1,504,000
Investment Income	116,000	92,000	22,000	15,000	(1,000)
Total Revenue	\$ 2,564,000	\$ 5,428,000	\$ 4,077,000	\$ 3,655,000	\$ 2,707,000
EXPENSE	2021	2020	2019	2018	2017
Program Services	\$ 2,711,000	\$ 2,637,000	\$ 2,161,000	\$ 1,971,000	\$ 1,601,000
Fundraising	535,000	689,000	498,000	536,000	599,000
Management and General	302,000	282,000	276,000	273,000	196,000
Total Expense	3,548,000	3,608,000	2,935,000	2,780,000	2,396,000
Surplus	\$ (984,000)*	\$ 1,820,000	\$ 1,142,000	\$ 875,000	\$ 311,000

*Like many nonprofit organizations, the COVID-19 pandemic impacted overall fundraising, especially through events that were canceled, postponed, or re-imagined as virtual events.

BOARD OF DIRECTORS, COMMITTEES AND STAFF

Chairman Michael Nierenberg*

Founder and CEO Samuel Waxman, MD*

Executive Director William T. Sullivan*

President Spencer Waxman*

Vice President Howard Kurz*

Vice President Dena K. Weiner*

Treasurer Thomas A. Conway*

Assistant Treasurer Nick Santoro

Secretary Jody Gorin*

Board of Directors

Chris Arlotta, Frederick W. Barney, Jr., Ethan Dmitrovsky, M.D., Kenneth Fishel, James E. Frankel*, Dennis A. Herman, Linda Herman, W. David Hinkelman, James A. Ingram, Gary Jacob*, Samantha Jones, Gerard F. Joyce, Matthew Lyons, Peeyush Misra, Garry Nolan, Ph.D., Riva Ariella Ritvo-Slifka, Ph.D., Lewis A. Rubin*, Samantha Santiago-Jones, Howard Shlafmitz, Baron Silverstein, Joseph Steffa, Marc Taub, Scott Waxman, Ari Zagdanski

*Executive Committee

Honorary Directors

Maureen Cogan, Susan W. Rose, Alan P. Safir, Joan A. Safir, Zena Wiener

Scientific Advisory Board

Steven Burakoff, M.D.

Matthew Galsky, M.D.

Lorraine Gudas, Ph.D.

Mark A. Israel, M.D.

Nancy Speck, Ph.D.

Ashani Weeraratna, Ph.D.

Hua Yu, Ph.D.

Chairman's Council

Lawrence Altman, Karen Amster-Young, Arminio Fraga, Gary Gladstein, Clifford Greenberg, Kobi Halperin, Robert Kantor, Orital Karelic, Gabriel Kreuther, Erica Linden-Fineberg, Thomas Marano, J. Jay Mautner, Peter Mondics, Laurie Schaffran, LCSW, Randi Schatz, Tony M. Shogren, Tadashi Shoji, John Varvatos, Marion N. Waxman

Associate Board

Co-chairs: Charbel Abi-Hassoun and Allie Gorin

Members: Kevin Amendola, Christina Czachor, Jeremy Epstein, Bryan Griffin, Christy Haworth, Lia Higgins, Jessica Ho, Emma Kurz, Arianna Miskel, Jake Saltzman, Sara Waxman

Collaborating for a Cure Capital Campaign Committee

Co-chairs Michael Nierenberg and Ari Zagdanski
James E. Frankel, Howard Kurz, Lewis A. Rubin, Joseph Steffa, William T. Sullivan, Spencer Waxman, Samuel Waxman, M.D., Dena K. Weiner

In Memoriam

Margaret Hayes Adame, Dale Claman, Peter Claman, Martin L. Coyne, Ruth Finley, Bernard Kaminsky, Mary Kantor, Costas Kondylis, Abner Levine, Mildred Levine, Edwin C. Scheurer, Alfred J. Seaman, David S. Taub

FOUNDATION TEAM

Founder and Chief Executive Officer – Samuel Waxman, M.D.

Executive Director – William T. Sullivan

Director of Special Projects – Suzanna Houston

Director of Marketing and Communications – Wylie G. Tené

Director of Special Events – Karen Kirk

Development Coordinator – Erica Linden-Fineberg

Chief Scientific Advisor – Jonathan Licht, M.D.

Chief Mission Officer – Alan Rosmarin, M.D.

Campaign Fundraising Counsel: Koszyn & Company

Annual Report Design: I Can Do That Productions



**SAMUEL WAXMAN CANCER
RESEARCH FOUNDATION**

**SAMUEL WAXMAN
CANCER RESEARCH FOUNDATION**

**420 LEXINGTON AVENUE, SUITE 825
NEW YORK, NY 10170**

TEL: 212-867-4502
SWCRF@WAXMANCANCER.ORG
WAXMANCANCER.ORG



**SAMUEL WAXMAN CANCER
RESEARCH FOUNDATION**